

SLM Student Loan Trust 2006-A

Table of Contents

ORIGINAL POOL CHARACTERISTICS AS OF STATISTICAL CUTOFF DATE..... 3

SUMMARY COMPOSITION OF THE INITIAL TRUST STUDENT LOANS..... 3

DISTRIBUTION OF THE INITIAL TRUST STUDENT LOANS BY LOAN TYPE 6

Number of Loans 6

Aggregate Outstanding Principal Balance 7

Percent of Pool By Outstanding Principal Balance 8

DISTRIBUTION OF THE INITIAL TRUST STUDENT LOANS BY BORROWER INTEREST RATES 9

Number of Loans 9

Aggregate Outstanding Principal Balance 10

Percent of Pool By Outstanding Principal Balance 12

DISTRIBUTION OF THE INITIAL TRUST STUDENT LOANS BY CURRENT BORROWER PAYMENT STATUS 13

Number of Loans 13

Aggregate Outstanding Principal Balance 14

Percent of Pool By Outstanding Principal Balance 15

DISTRIBUTION OF THE INITIAL TRUST STUDENT LOANS BY DAYS LATE AS OF CUTOFF DATE 16

Number of Loans 16

Aggregate Outstanding Principal Balance 17

Percent of Pool By Outstanding Principal Balance 18

SCHEDULED WEIGHTED AVERAGE REMAINING MONTHS IN STATUS OF THE INITIAL TRUST STUDENT LOANS BY CURRENT BORROWER PAYMENT STATUS 19

GEOGRAPHIC DISTRIBUTION OF THE INITIAL TRUST STUDENT LOANS AS OF THE STATISTICAL CUTOFF DATE 22

Number of Loans 22

Aggregate Outstanding Principal Balance 31

Percent of Pool By Outstanding Principal Balance 40

DISTRIBUTION OF FICO CREDIT SCORES AS OF A DATE NEAR THE LOAN APPLICATION –ALL BORROWERS AND CO-BORROWERS 49

Aggregate Outstanding Principal Balance 49

Percent of Pool By Outstanding Principal Balance 52

DISTRIBUTION OF FICO CREDIT SCORES AS OF A DATE NEAR THE LOAN APPLICATION –CO-BORROWER LOANS 54

Aggregate Outstanding Principal Balance 54

Percent of Pool By Outstanding Principal Balance 57

DISTRIBUTION OF FICO CREDIT SCORES AS OF A DATE NEAR THE LOAN APPLICATION –LOANS WITHOUT CO-BORROWER 59

Aggregate Outstanding Principal Balance 59

Percent of Pool By Outstanding Principal Balance 62

WEIGHTED AVERAGE FICO CREDIT SCORES –ALL BORROWERS AND CO-BORROWERS 65

WEIGHTED AVERAGE FICO CREDIT SCORES –CO-BORROWER LOANS 67

WEIGHTED AVERAGE FICO CREDIT SCORES –LOANS WITHOUT CO-BORROWERS 69

STATIC POOL DATA 71

LOAN STATUS 71

Number of Loans 71

Aggregate Outstanding Principal Balance 74

Percent of Total Principal Balance 77

DELINQUENCY STATUS 80

Number of Loans 80

Aggregate Outstanding Principal Balance 86

Percent of Total Principal Balance 92

SERVICER DELINQUENCY PURCHASES AND LOSSES 98

Periodic 98

Periodic as a Percentage of Beginning Period Pool Balance 101

Cumulative 104

Cumulative as a Percentage of Original Pool Balance 107

PREPAYMENTS 110

GRAPHS 113

TRANSACTION TYPE: PRIVATE CREDIT

ORIGINAL POOL CHARACTERISTICS AS OF STATISTICAL CUTOFF DATE

SLM Student Loan Trust 2006-A

SUMMARY COMPOSITION OF THE INITIAL TRUST STUDENT LOANS

Issue	Settlement Date	Aggregate Outstanding Principal Balance				# Borrowers	# Loans	WAM (Months)
		Total (\$)	Treasury Bill (\$)	Prime (\$)	Fixed (\$)			
2002-A	10/17/02	690,334,386	95,902,922	592,779,809	1,651,655	48,548	70,975	188
2003-A	03/13/03	1,005,180,179	301,294,062	696,018,710	7,867,407	77,197	122,161	177
2003-B	06/27/03	1,247,280,318	253,845,947	989,669,707	3,764,664	103,358	143,265	189
2003-C	10/09/03	1,249,966,061	159,473,068	1,088,620,864	1,872,130	91,587	134,792	190
2004-A	03/25/04	1,252,158,292	248,697,351	1,002,171,131	1,289,810	104,834	148,353	193
2004-B	05/26/04	1,282,574,440	58,242,375	1,224,010,957	321,109	109,001	121,190	206
2005-A	04/28/05	1,505,063,683	43,126,420	1,461,669,711	267,551	132,087	162,192	199
2005-B	10/27/05	1,500,154,963	25,928,703	1,474,126,290	99,970	128,332	158,827	201

TRANSACTION TYPE: PRIVATE CREDIT

ORIGINAL POOL CHARACTERISTICS AS OF STATISTICAL CUTOFF DATE

SLM Student Loan Trust 2006-A

SUMMARY COMPOSITION OF THE INITIAL TRUST STUDENT LOANS

Issue	Settlement Date	Average Outstanding Principal Balance			
		Per Borrower (\$)	Per Loan - T-Bill (\$)	Per Loan - Prime (\$)	Per Loan - Fixed (\$)
2002-A	10/17/02	14,220	11,636	9,473	10,388
2003-A	03/13/03	13,021	7,320	8,754	5,270
2003-B	06/27/03	12,068	7,909	8,962	5,074
2003-C	10/09/03	13,648	8,141	9,478	5,506
2004-A	03/25/04	11,944	9,609	8,200	5,159
2004-B	05/26/04	11,767	10,524	10,589	5,443
2005-A	04/28/05	11,394	10,891	9,239	8,631
2005-B	10/27/05	11,690	11,215	9,419	7,690

TRANSACTION TYPE: PRIVATE CREDIT

ORIGINAL POOL CHARACTERISTICS AS OF STATISTICAL CUTOFF DATE

SLM Student Loan Trust 2006-A

SUMMARY COMPOSITION OF THE INITIAL TRUST STUDENT LOANS

Issue	Settlement Date	WAC	WA Spread - 91-day T-Bill	WA Spread - Prime	WAC - Fixed
2002-A	10/17/02	5.52%	2.88%	0.85%	9.61%
2003-A	03/13/03	5.07%	3.34%	0.86%	10.62%
2003-B	06/27/03	5.05%	3.28%	0.91%	10.71%
2003-C	10/09/03	5.06%	3.26%	0.91%	10.63%
2004-A	03/25/04	5.15%	3.22%	1.39%	10.88%
2004-B	05/26/04	5.18%	2.90%	1.24%	9.89%
2005-A	04/28/05	7.17%	3.11%	1.85%	10.06%
2005-B	10/27/05	7.90%	3.08%	1.52%	9.42%

TRANSACTION TYPE: PRIVATE CREDIT

ORIGINAL POOL CHARACTERISTICS AS OF STATISTICAL CUTOFF DATE

SLM Student Loan Trust 2006-A

DISTRIBUTION OF THE INITIAL TRUST STUDENT LOANS BY LOAN TYPE

Issue	Settlement Date	Number of Loans				Total
		Signature Student Loans	LAWLOANS	MBA Loans	MEDLOANS	
2002-A	10/17/02	41,657	13,415	6,820	9,083	70,975
2003-A	03/13/03	79,835	32,819	3,593	5,914	122,161
2003-B	06/27/03	108,361	24,043	3,906	6,955	143,265
2003-C	10/09/03	101,800	20,700	8,529	3,763	134,792
2004-A	03/25/04	112,926	18,659	4,185	12,583	148,353
2004-B	05/26/04	102,128	7,121	4,004	7,937	121,190
2005-A	04/28/05	146,275	7,977	3,454	4,486	162,192
2005-B	10/27/05	144,104	7,633	3,465	3,625	158,827

ORIGINAL POOL CHARACTERISTICS AS OF STATISTICAL CUTOFF DATE

DISTRIBUTION OF THE INITIAL TRUST STUDENT LOANS BY LOAN TYPE

Issue	Settlement Date	Aggregate Outstanding Principal Balance				Total
		Signature Student Loans	LAWLOANS	MBA Loans	MEDLOANS	
2002-A	10/17/02	\$342,171,837	\$139,713,104	\$105,613,118	\$102,836,328	\$690,334,386
2003-A	03/13/03	\$681,874,211	\$222,638,633	\$49,550,885	\$51,116,450	\$1,005,180,179
2003-B	06/27/03	\$951,183,050	\$177,860,139	\$55,885,315	\$62,351,814	\$1,247,280,318
2003-C	10/09/03	\$895,932,823	\$190,122,871	\$127,214,047	\$36,696,321	\$1,249,966,061
2004-A	03/25/04	\$902,981,783	\$165,027,550	\$58,843,350	\$125,305,608	\$1,252,158,292
2004-B	05/26/04	\$1,025,080,903	\$94,945,393	\$86,287,351	\$76,260,793	\$1,282,574,440
2005-A	04/28/05	\$1,302,682,905	\$88,872,084	\$67,203,397	\$46,305,297	\$1,505,063,683
2005-B	10/27/05	\$1,306,065,650	\$91,018,131	\$64,328,057	\$38,743,125	\$1,500,154,963

TRANSACTION TYPE: PRIVATE CREDIT

ORIGINAL POOL CHARACTERISTICS AS OF STATISTICAL CUTOFF DATE

SLM Student Loan Trust 2006-A

DISTRIBUTION OF THE INITIAL TRUST STUDENT LOANS BY LOAN TYPE

Issue	Settlement Date	Percent of Pool By Outstanding Principal Balance				Total
		Signature Student Loans	LAWLOANS	MBA Loans	MEDLOANS	
2002-A	10/17/02	49.6%	20.2%	15.3%	14.9%	100.0%
2003-A	03/13/03	67.8%	22.1%	4.9%	5.1%	100.0%
2003-B	06/27/03	76.3%	14.3%	4.5%	5.0%	100.0%
2003-C	10/09/03	71.7%	15.2%	10.2%	2.9%	100.0%
2004-A	03/25/04	72.1%	13.2%	4.7%	10.0%	100.0%
2004-B	05/26/04	79.9%	7.4%	6.7%	5.9%	100.0%
2005-A	04/28/05	86.6%	5.9%	4.5%	3.1%	100.0%
2005-B	10/27/05	87.1%	6.1%	4.3%	2.6%	100.0%

TRANSACTION TYPE: PRIVATE CREDIT

ORIGINAL POOL CHARACTERISTICS AS OF STATISTICAL CUTOFF DATE

SLM Student Loan Trust 2006-A

DISTRIBUTION OF THE INITIAL TRUST STUDENT LOANS BY BORROWER INTEREST RATES

Issue	Settlement Date	Number of Loans													Total
		<= 3.00	3.01 - 3.50%	3.51 - 4.00%	4.01 - 4.50%	4.51 - 5.00%	5.01 - 5.50%	5.51 - 6.00%	6.01 - 6.50%	6.51 - 7.00%	7.01 - 7.50%	7.51 - 8.00%	8.01 - 8.50%	> 8.50	
2002-A	10/17/02	-	-	323	5,938	17,952	9,393	21,551	2,488	9,966	1,077	1	183	2,103	70,975
2003-A	03/13/03	-	666	8,999	19,438	43,129	26,952	4,657	14,064	696	-	114	314	3,132	122,161
2003-B	06/27/03	-	1,100	17,333	25,752	35,689	34,791	4,376	18,591	1,197	-	119	824	3,493	143,265
2003-C	10/09/03	-	4,877	14,981	34,099	17,309	33,161	3,864	19,122	2,264	1	84	1,140	3,890	134,792
2004-A	03/25/04	1,395	7,807	36,003	28,595	29,292	10,262	15,927	2,721	167	1,603	8,474	69	6,038	148,353
2004-B	05/26/04	1,717	11,748	29,069	12,135	18,089	17,520	7,815	890	612	3,544	14,682	5	3,364	121,190
2005-A	04/28/05	-	-	1	2,535	12,937	32,594	13,661	27,639	15,191	13,899	1,577	1,515	40,643	162,192
2005-B	10/27/05	-	-	2	-	292	3,376	19,153	32,389	16,538	15,147	19,823	15,654	36,453	158,827

DISTRIBUTION OF THE INITIAL TRUST STUDENT LOANS BY BORROWER INTEREST RATES

Issue	Settlement Date	Aggregate Outstanding Principal Balance						
		<= 3.00	3.01 - 3.50%	3.51 - 4.00%	4.01 - 4.50%	4.51 - 5.00%	5.01 - 5.50%	5.51 - 6.00%
2002-A	10/17/02	\$-	\$-	\$3,443,400	\$76,262,018	\$200,732,774	\$87,150,675	\$192,360,378
2003-A	03/13/03	\$-	\$6,778,403	\$104,228,046	\$172,560,058	\$323,591,464	\$208,940,333	\$46,771,631
2003-B	06/27/03	\$-	\$13,835,537	\$176,675,192	\$236,082,821	\$288,381,449	\$284,251,055	\$43,959,009
2003-C	10/09/03	\$-	\$83,089,634	\$155,346,466	\$295,734,486	\$163,689,381	\$266,266,332	\$42,678,518
2004-A	03/25/04	\$20,340,131	\$65,961,701	\$335,202,579	\$242,616,611	\$220,583,727	\$73,452,711	\$127,718,980
2004-B	05/26/04	\$43,941,734	\$146,189,390	\$293,689,499	\$131,167,983	\$184,470,274	\$166,445,557	\$78,611,042
2005-A	04/28/05	\$-	\$-	\$2,327	\$55,680,371	\$133,821,926	\$307,158,278	\$128,000,457
2005-B	10/27/05	\$-	\$-	\$8,126	\$-	\$4,093,951	\$43,137,575	\$199,612,469

DISTRIBUTION OF THE INITIAL TRUST STUDENT LOANS BY BORROWER INTEREST RATES

Issue	Settlement Date	Aggregate Outstanding Principal Balance						Total
		6.01 - 6.50%	6.51 - 7.00%	7.01 - 7.50%	7.51 - 8.00%	8.01 - 8.50%	> 8.50	
2002-A	10/17/02	\$29,697,439	\$73,538,050	\$10,762,638	\$18,628	\$1,108,400	\$15,259,986	\$690,334,386
2003-A	03/13/03	\$110,252,143	\$6,549,682	\$-	\$736,954	\$2,980,313	\$21,791,151	\$1,005,180,179
2003-B	06/27/03	\$152,894,102	\$12,484,318	\$-	\$813,916	\$8,114,657	\$29,788,262	\$1,247,280,318
2003-C	10/09/03	\$168,332,043	\$26,419,962	\$11,289	\$552,602	\$11,845,154	\$36,000,194	\$1,249,966,061
2004-A	03/25/04	\$30,691,778	\$2,009,054	\$10,959,679	\$63,676,633	\$424,734	\$58,519,974	\$1,252,158,292
2004-B	05/26/04	\$10,334,410	\$10,859,849	\$37,302,199	\$145,821,452	\$33,563	\$33,707,489	\$1,282,574,440
2005-A	04/28/05	\$223,553,366	\$129,881,305	\$126,982,186	\$19,547,971	\$14,779,674	\$365,655,822	\$1,505,063,683
2005-B	10/27/05	\$308,900,264	\$160,682,970	\$140,814,895	\$170,349,961	\$145,116,112	\$327,438,640	\$1,500,154,963

ORIGINAL POOL CHARACTERISTICS AS OF STATISTICAL CUTOFF DATE

DISTRIBUTION OF THE INITIAL TRUST STUDENT LOANS BY BORROWER INTEREST RATES

Issue	Settlement Date	Percent of Pool By Outstanding Principal Balance													Total
		<= 3.00	3.01 - 3.50%	3.51 - 4.00%	4.01 - 4.50%	4.51 - 5.00%	5.01 - 5.50%	5.51 - 6.00%	6.01 - 6.50%	6.51 - 7.00%	7.01 - 7.50%	7.51 - 8.00%	8.01 - 8.50%	> 8.50	
2002-A	10/17/02	- %	- %	0.5%	11.0%	29.1%	12.6%	27.9%	4.3%	10.7%	1.6%	- %	0.2%	2.2%	100.0%
2003-A	03/13/03	- %	0.7%	10.4%	17.2%	32.2%	20.8%	4.7%	11.0%	0.7%	- %	0.1%	0.3%	2.2%	100.0%
2003-B	06/27/03	- %	1.1%	14.2%	18.9%	23.1%	22.8%	3.5%	12.3%	1.0%	- %	0.1%	0.7%	2.4%	100.0%
2003-C	10/09/03	- %	6.6%	12.4%	23.7%	13.1%	21.3%	3.4%	13.5%	2.1%	- %	- %	0.9%	2.9%	100.0%
2004-A	03/25/04	1.6%	5.3%	26.8%	19.4%	17.6%	5.9%	10.2%	2.5%	0.2%	0.9%	5.1%	- %	4.7%	100.0%
2004-B	05/26/04	3.4%	11.4%	22.9%	10.2%	14.4%	13.0%	6.1%	0.8%	0.8%	2.9%	11.4%	- %	2.6%	100.0%
2005-A	04/28/05	- %	- %	- %	3.7%	8.9%	20.4%	8.5%	14.9%	8.6%	8.4%	1.3%	1.0%	24.3%	100.0%
2005-B	10/27/05	- %	- %	- %	- %	0.3%	2.9%	13.3%	20.6%	10.7%	9.4%	11.4%	9.7%	21.8%	100.0%

TRANSACTION TYPE: PRIVATE CREDIT

ORIGINAL POOL CHARACTERISTICS AS OF STATISTICAL CUTOFF DATE

SLM Student Loan Trust 2006-A

DISTRIBUTION OF THE INITIAL TRUST STUDENT LOANS BY CURRENT BORROWER PAYMENT STATUS

Issue	Settlement Date	Number of Loans								Total
		School	Grace	Deferment	Forbearance	1st Year Repayment	2nd Year Repayment	3rd Year Repayment	> 3 Years Repayment	
2002-A	10/17/02	9,346	31,295	794	1,588	22,043	2,467	737	2,705	70,975
2003-A	03/13/03	54,292	8,532	1,345	3,973	8,642	6,650	8,621	30,106	122,161
2003-B	06/27/03	82,728	12,478	929	2,579	6,482	11,421	6,167	20,481	143,265
2003-C	10/09/03	68,533	28,552	1,599	3,979	10,536	7,682	3,105	10,806	134,792
2004-A	03/25/04	70,479	20,691	6,757	7,154	24,659	7,860	2,395	8,358	148,353
2004-B	05/26/04	99,304	12,493	1,416	1,298	3,604	1,046	473	1,556	121,190
2005-A	04/28/05	112,167	21,211	2,360	2,550	20,229	1,262	762	1,651	162,192
2005-B	10/27/05	106,274	31,005	2,068	2,555	14,702	830	564	829	158,827

TRANSACTION TYPE: PRIVATE CREDIT

ORIGINAL POOL CHARACTERISTICS AS OF STATISTICAL CUTOFF DATE

SLM Student Loan Trust 2006-A

DISTRIBUTION OF THE INITIAL TRUST STUDENT LOANS BY CURRENT BORROWER PAYMENT STATUS

Aggregate Outstanding Principal Balance										
Issue	Settlement Date	School	Grace	Deferment	Forbearance	1st Year Repayment	2nd Year Repayment	3rd Year Repayment	> 3 Years Repayment	Total
2002-A	10/17/02	\$114,272,443	\$304,679,340	\$11,193,001	\$18,490,623	\$187,523,469	\$19,599,919	\$8,147,888	\$26,427,704	\$690,334,386
2003-A	03/13/03	\$476,038,916	\$73,859,692	\$10,812,862	\$36,514,313	\$74,342,100	\$66,125,299	\$80,641,304	\$186,845,694	\$1,005,180,179
2003-B	06/27/03	\$764,860,398	\$90,559,819	\$6,647,830	\$22,881,581	\$51,135,881	\$120,426,643	\$56,164,251	\$134,603,916	\$1,247,280,318
2003-C	10/09/03	\$643,043,381	\$286,949,809	\$14,952,354	\$38,399,414	\$91,763,001	\$78,407,059	\$29,841,421	\$66,609,624	\$1,249,966,061
2004-A	03/25/04	\$556,593,898	\$169,007,775	\$68,560,802	\$74,095,717	\$226,232,443	\$81,573,102	\$22,799,026	\$53,295,529	\$1,252,158,292
2004-B	05/26/04	\$1,095,549,657	\$99,187,953	\$15,291,793	\$12,541,247	\$32,951,116	\$10,557,519	\$4,700,207	\$11,794,947	\$1,282,574,440
2005-A	04/28/05	\$1,074,870,310	\$184,755,140	\$19,995,307	\$25,984,173	\$165,113,448	\$13,870,579	\$7,914,048	\$12,560,677	\$1,505,063,683
2005-B	10/27/05	\$1,023,485,747	\$297,188,461	\$17,119,828	\$25,679,768	\$115,335,270	\$8,097,903	\$6,138,234	\$7,109,752	\$1,500,154,963

TRANSACTION TYPE: PRIVATE CREDIT

ORIGINAL POOL CHARACTERISTICS AS OF STATISTICAL CUTOFF DATE

SLM Student Loan Trust 2006-A

DISTRIBUTION OF THE INITIAL TRUST STUDENT LOANS BY CURRENT BORROWER PAYMENT STATUS

Percent of Pool By Outstanding Principal Balance

Issue	Settlement Date	School	Grace	Deferment	Forbearance	1st Year Repayment	2nd Year Repayment	3rd Year Repayment	> 3 Years Repayment	Total
2002-A	10/17/02	16.6%	44.1%	1.6%	2.7%	27.2%	2.8%	1.2%	3.8%	100.0%
2003-A	03/13/03	47.4%	7.3%	1.1%	3.6%	7.4%	6.6%	8.0%	18.6%	100.0%
2003-B	06/27/03	61.3%	7.3%	0.5%	1.8%	4.1%	9.7%	4.5%	10.8%	100.0%
2003-C	10/09/03	51.4%	23.0%	1.2%	3.1%	7.3%	6.3%	2.4%	5.3%	100.0%
2004-A	03/25/04	44.5%	13.5%	5.5%	5.9%	18.1%	6.5%	1.8%	4.3%	100.0%
2004-B	05/26/04	85.4%	7.7%	1.2%	1.0%	2.6%	0.8%	0.4%	0.9%	100.0%
2005-A	04/28/05	71.4%	12.3%	1.3%	1.7%	11.0%	0.9%	0.5%	0.8%	100.0%
2005-B	10/27/05	68.2%	19.8%	1.1%	1.7%	7.7%	0.5%	0.4%	0.5%	100.0%

TRANSACTION TYPE: PRIVATE CREDIT

ORIGINAL POOL CHARACTERISTICS AS OF STATISTICAL CUTOFF DATE

SLM Student Loan Trust 2006-A

DISTRIBUTION OF THE TRUST STUDENT LOANS BY DAYS LATE AS OF THE CUTOFF DATE

Issue	Settlement Date	Number of Loans			Total
		0 - 29 Days	30 - 59 Days	60 Days	
2002-A	10/17/02	68,970	2,005	-	70,975
2003-A	03/13/03	120,436	1,725	-	122,161
2003-B	06/27/03	142,327	933	5	143,265
2003-C	10/09/03	133,646	1,128	18	134,792
2004-A	03/25/04	146,745	1,563	45	148,353
2004-B	05/26/04	120,988	201	1	121,190
2005-A	04/28/05	162,192	-	-	162,192
2005-B	10/27/05	157,821	1,006	-	158,827

TRANSACTION TYPE: PRIVATE CREDIT

ORIGINAL POOL CHARACTERISTICS AS OF STATISTICAL CUTOFF DATE

SLM Student Loan Trust 2006-A

DISTRIBUTION OF THE TRUST STUDENT LOANS BY DAYS LATE AS OF THE CUTOFF DATE

Issue	Settlement Date	Aggregate Outstanding Principal Balance			
		0 - 29 Days	30 - 59 Days	60 Days	Total
2002-A	10/17/02	\$674,211,811	\$16,122,575	\$-	\$690,334,386
2003-A	03/13/03	\$990,946,266	\$14,233,913	\$-	\$1,005,180,179
2003-B	06/27/03	\$1,239,650,358	\$7,584,635	\$45,325	\$1,247,280,318
2003-C	10/09/03	\$1,240,058,301	\$9,820,715	\$87,045	\$1,249,966,061
2004-A	03/25/04	\$1,238,181,784	\$13,615,958	\$360,550	\$1,252,158,292
2004-B	05/26/04	\$1,280,804,652	\$1,766,069	\$3,719	\$1,282,574,440
2005-A	04/28/05	\$1,505,063,683	\$-	\$-	\$1,505,063,683
2005-B	10/27/05	\$1,492,122,766	\$8,032,196	\$-	\$1,500,154,963

TRANSACTION TYPE: PRIVATE CREDIT

ORIGINAL POOL CHARACTERISTICS AS OF STATISTICAL CUTOFF DATE

SLM Student Loan Trust 2006-A

DISTRIBUTION OF THE TRUST STUDENT LOANS BY DAYS LATE AS OF THE CUTOFF DATE

Issue	Settlement Date	Percent of Pool By Outstanding Principal Balance			
		0 - 29 Days	30 - 59 Days	60 Days	Total
2002-A	10/17/02	97.7%	2.3%	- %	100.0%
2003-A	03/13/03	98.6%	1.4%	- %	100.0%
2003-B	06/27/03	99.4%	0.6%	- %	100.0%
2003-C	10/09/03	99.2%	0.8%	- %	100.0%
2004-A	03/25/04	98.9%	1.1%	- %	100.0%
2004-B	05/26/04	99.9%	0.1%	- %	100.0%
2005-A	04/28/05	100.0%	- %	- %	100.0%
2005-B	10/27/05	99.5%	0.5%	- %	100.0%

SCHEDULED WEIGHTED AVERAGE REMAINING MONTHS IN STATUS OF THE INITIAL TRUST STUDENT LOANS BY CURRENT BORROWER PAYMENT STATUS

Issue	Settlement Date	Current Status	Scheduled Remaining Months in Status				
			School	Grace	Deferral	Forbearance	Repayment
2002-A	10/17/02	School	15.3	9.1	-	-	182.4
		Grace	-	3.8	-	-	182.0
		Deferral	-	-	9.4	-	234.0
		Forbearance	-	-	-	2.6	200.3
		Repayment	-	-	-	-	178.1
2003-A	03/13/03	School	17.6	6.0	-	-	179.7
		Grace	-	2.7	-	-	179.0
		Deferral	-	-	18.7	-	170.4
		Forbearance	-	-	-	2.9	170.2
		Repayment	-	-	-	-	145.5
2003-B	06/27/03	School	21.3	6.0	-	-	179.9
		Grace	-	2.5	-	-	173.9
		Deferral	-	-	19.9	-	166.2
		Forbearance	-	-	-	2.2	174.6
		Repayment	-	-	-	-	155.4

ORIGINAL POOL CHARACTERISTICS AS OF STATISTICAL CUTOFF DATE

SCHEDULED WEIGHTED AVERAGE REMAINING MONTHS IN STATUS OF THE INITIAL TRUST STUDENT LOANS BY CURRENT BORROWER PAYMENT STATUS

Issue	Settlement Date	Current Status	Scheduled Remaining Months in Status				
			School	Grace	Deferral	Forbearance	Repayment
2003-C	10/09/03	School	18.9	6.3	-	-	180.0
		Grace	-	3.4	-	-	179.8
		Deferral	-	-	18.8	-	178.3
		Forbearance	-	-	-	2.5	180.1
		Repayment	-	-	-	-	161.7
2004-A	03/25/04	School	18.0	6.8	-	-	181.4
		Grace	-	6.1	-	-	187.4
		Deferral	-	-	12.5	-	197.6
		Forbearance	-	-	-	2.5	185.0
		Repayment	-	-	-	-	173.2
2004-B	05/26/04	School	21.6	6.4	-	-	180.4
		Grace	-	5.5	-	-	183.8
		Deferral	-	-	6.0	-	223.8
		Forbearance	-	-	-	2.1	188.9
		Repayment	-	-	-	-	188.2

TRANSACTION TYPE: PRIVATE CREDIT

ORIGINAL POOL CHARACTERISTICS AS OF STATISTICAL CUTOFF DATE

SLM Student Loan Trust 2006-A

SCHEDULED WEIGHTED AVERAGE REMAINING MONTHS IN STATUS OF THE INITIAL TRUST STUDENT LOANS BY CURRENT BORROWER PAYMENT STATUS

Issue	Settlement Date	Current Status	Scheduled Remaining Months in Status				
			School	Grace	Deferral	Forbearance	Repayment
2005-A	04/28/05	School	19.4	6.5	-	-	180.7
		Grace	-	4.6	-	-	180.5
		Deferral	-	-	17.4	-	185.1
		Forbearance	-	-	-	2.4	183.4
		Repayment	-	-	-	-	175.9
2005-B	10/27/05	School	21.8	6.6	-	-	180.8
		Grace	-	3.4	-	-	180.1
		Deferral	-	-	18.9	-	179.5
		Forbearance	-	-	-	2.7	186.1
		Repayment	-	-	-	-	177.6

TRANSACTION TYPE: PRIVATE CREDIT

ORIGINAL POOL CHARACTERISTICS AS OF STATISTICAL CUTOFF DATE

SLM Student Loan Trust 2006-A

GEOGRAPHIC DISTRIBUTION OF THE INITIAL TRUST STUDENT LOANS AS OF THE STATISTICAL CUTOFF DATE

Issue	Settlement Date	Number of Loans					
		Alaska	Alabama	Arkansas	Arizona	California	Colorado
2002-A	10/17/02	40	558	212	884	4,495	888
2003-A	03/13/03	138	1,129	315	2,083	17,975	1,654
2003-B	06/27/03	139	1,592	499	2,232	18,085	1,936
2003-C	10/09/03	99	1,133	464	2,590	17,484	1,525
2004-A	03/25/04	112	2,107	601	2,302	17,019	1,841
2004-B	05/26/04	49	1,118	501	1,469	11,821	1,386
2005-A	04/28/05	110	2,208	679	1,986	15,703	1,704
2005-B	10/27/05	90	-	635	1,661	12,914	1,847

TRANSACTION TYPE: PRIVATE CREDIT

ORIGINAL POOL CHARACTERISTICS AS OF STATISTICAL CUTOFF DATE

SLM Student Loan Trust 2006-A

GEOGRAPHIC DISTRIBUTION OF THE INITIAL TRUST STUDENT LOANS AS OF THE STATISTICAL CUTOFF DATE

Issue	Settlement Date	Number of Loans					
		Connecticut	Delaware	DC	Florida	Georgia	Hawaii
2002-A	10/17/02	1,730	216	541	2,531	2,149	78
2003-A	03/13/03	2,607	378	1,138	7,765	3,204	319
2003-B	06/27/03	2,947	398	1,009	8,295	3,531	422
2003-C	10/09/03	2,989	426	1,027	9,498	3,167	331
2004-A	03/25/04	2,431	466	1,146	10,911	3,922	453
2004-B	05/26/04	3,058	550	663	6,943	2,625	388
2005-A	04/28/05	3,465	678	713	9,803	3,905	442
2005-B	10/27/05	4,413	623	579	7,701	3,476	460

TRANSACTION TYPE: PRIVATE CREDIT

ORIGINAL POOL CHARACTERISTICS AS OF STATISTICAL CUTOFF DATE

SLM Student Loan Trust 2006-A

GEOGRAPHIC DISTRIBUTION OF THE INITIAL TRUST STUDENT LOANS AS OF THE STATISTICAL CUTOFF DATE

Issue	Settlement Date	Number of Loans					
		Iowa	Idaho	Illinois	Indiana	Kansas	Kentucky
2002-A	10/17/02	211	108	3,611	1,261	428	511
2003-A	03/13/03	495	284	5,142	1,989	628	637
2003-B	06/27/03	748	340	7,117	3,084	1,104	896
2003-C	10/09/03	508	245	6,218	2,955	755	711
2004-A	03/25/04	645	261	7,781	3,775	1,142	1,253
2004-B	05/26/04	536	245	6,659	3,846	1,342	781
2005-A	04/28/05	839	215	9,679	4,474	1,520	1,388
2005-B	10/27/05	670	240	10,315	6,332	1,397	947

TRANSACTION TYPE: PRIVATE CREDIT

ORIGINAL POOL CHARACTERISTICS AS OF STATISTICAL CUTOFF DATE

SLM Student Loan Trust 2006-A

GEOGRAPHIC DISTRIBUTION OF THE INITIAL TRUST STUDENT LOANS AS OF THE STATISTICAL CUTOFF DATE

Issue	Settlement Date	Number of Loans					
		Louisiana	Massachusetts	Maryland	Maine	Michigan	Minnesota
2002-A	10/17/02	907	3,171	2,190	323	1,528	743
2003-A	03/13/03	1,310	5,420	3,347	599	2,941	1,559
2003-B	06/27/03	1,667	5,427	3,791	667	3,813	1,703
2003-C	10/09/03	1,413	6,374	2,927	686	3,610	1,173
2004-A	03/25/04	2,151	6,145	3,614	628	4,773	1,695
2004-B	05/26/04	1,241	5,432	2,907	695	3,325	972
2005-A	04/28/05	1,906	7,874	3,618	1,091	5,115	2,043
2005-B	10/27/05	-	8,443	3,465	952	6,128	1,797

TRANSACTION TYPE: PRIVATE CREDIT

ORIGINAL POOL CHARACTERISTICS AS OF STATISTICAL CUTOFF DATE

SLM Student Loan Trust 2006-A

GEOGRAPHIC DISTRIBUTION OF THE INITIAL TRUST STUDENT LOANS AS OF THE STATISTICAL CUTOFF DATE

Issue	Settlement Date	Number of Loans					
		Missouri	Mississippi	Montana	North Carolina	North Dakota	Nebraska
2002-A	10/17/02	837	293	87	1,953	79	153
2003-A	03/13/03	1,427	486	194	2,324	103	299
2003-B	06/27/03	2,268	632	248	2,753	94	359
2003-C	10/09/03	1,664	519	159	2,811	99	232
2004-A	03/25/04	2,098	682	180	3,539	144	301
2004-B	05/26/04	1,794	514	148	2,455	64	173
2005-A	04/28/05	2,451	657	183	3,189	98	300
2005-B	10/27/05	1,887	-	186	2,799	91	188

TRANSACTION TYPE: PRIVATE CREDIT

ORIGINAL POOL CHARACTERISTICS AS OF STATISTICAL CUTOFF DATE

SLM Student Loan Trust 2006-A

GEOGRAPHIC DISTRIBUTION OF THE INITIAL TRUST STUDENT LOANS AS OF THE STATISTICAL CUTOFF DATE

Issue	Settlement Date	Number of Loans					
		New Hampshire	New Jersey	New Mexico	Nevada	New York	Ohio
2002-A	10/17/02	505	4,658	123	230	12,898	2,513
2003-A	03/13/03	861	5,777	249	669	14,998	4,013
2003-B	06/27/03	909	6,615	265	683	15,802	5,864
2003-C	10/09/03	997	5,697	237	491	17,312	5,644
2004-A	03/25/04	1,137	5,981	303	623	13,766	5,857
2004-B	05/26/04	944	5,314	198	301	15,260	5,967
2005-A	04/28/05	1,729	7,766	253	715	17,019	8,184
2005-B	10/27/05	1,563	8,360	213	580	18,051	11,324

TRANSACTION TYPE: PRIVATE CREDIT

ORIGINAL POOL CHARACTERISTICS AS OF STATISTICAL CUTOFF DATE

SLM Student Loan Trust 2006-A

GEOGRAPHIC DISTRIBUTION OF THE INITIAL TRUST STUDENT LOANS AS OF THE STATISTICAL CUTOFF DATE

Issue	Settlement Date	Number of Loans					
		Oklahoma	Oregon	Pennsylvania	Rhode Island	South Carolina	South Dakota
2002-A	10/17/02	754	852	4,761	591	563	60
2003-A	03/13/03	766	1,731	7,342	784	864	107
2003-B	06/27/03	1,158	2,056	10,000	773	1,145	143
2003-C	10/09/03	1,234	1,841	7,881	838	754	79
2004-A	03/25/04	1,216	1,825	10,497	880	1,316	135
2004-B	05/26/04	1,116	1,083	10,476	574	944	106
2005-A	04/28/05	1,169	1,835	12,817	849	1,262	167
2005-B	10/27/05	1,669	1,771	10,693	922	1,295	79

TRANSACTION TYPE: PRIVATE CREDIT

ORIGINAL POOL CHARACTERISTICS AS OF STATISTICAL CUTOFF DATE

SLM Student Loan Trust 2006-A

GEOGRAPHIC DISTRIBUTION OF THE INITIAL TRUST STUDENT LOANS AS OF THE STATISTICAL CUTOFF DATE

Issue	Settlement Date	Number of Loans					
		Tennessee	Texas	Utah	Virginia	Vermont	Washington
2002-A	10/17/02	1,037	3,756	135	2,136	177	1,222
2003-A	03/13/03	1,272	5,787	291	3,589	230	2,524
2003-B	06/27/03	1,886	7,804	402	3,971	283	2,798
2003-C	10/09/03	1,509	6,513	286	3,518	281	2,764
2004-A	03/25/04	2,299	6,938	381	4,274	275	2,786
2004-B	05/26/04	1,827	5,714	293	3,147	302	1,640
2005-A	04/28/05	2,238	6,717	362	3,988	360	2,757
2005-B	10/27/05	2,044	7,906	342	4,250	284	2,805

TRANSACTION TYPE: PRIVATE CREDIT

ORIGINAL POOL CHARACTERISTICS AS OF STATISTICAL CUTOFF DATE

SLM Student Loan Trust 2006-A

GEOGRAPHIC DISTRIBUTION OF THE INITIAL TRUST STUDENT LOANS AS OF THE STATISTICAL CUTOFF DATE

Issue	Settlement Date	Number of Loans				
		West Virginia	Wisconsin	Wyoming	Other	Total
2002-A	10/17/02	349	665	46	228	70,975
2003-A	03/13/03	488	1,084	60	786	122,161
2003-B	06/27/03	714	1,332	80	786	143,265
2003-C	10/09/03	619	1,368	64	1,073	134,792
2004-A	03/25/04	811	1,585	100	1,250	148,353
2004-B	05/26/04	703	1,016	72	493	121,190
2005-A	04/28/05	1,022	1,834	89	1,024	162,192
2005-B	10/27/05	1,181	2,170	86	1,003	158,827

TRANSACTION TYPE: PRIVATE CREDIT

ORIGINAL POOL CHARACTERISTICS AS OF STATISTICAL CUTOFF DATE

SLM Student Loan Trust 2006-A

GEOGRAPHIC DISTRIBUTION OF THE INITIAL TRUST STUDENT LOANS AS OF THE STATISTICAL CUTOFF DATE

Issue	Settlement Date	Aggregate Outstanding Principal Balance					
		Alaska	Alabama	Arkansas	Arizona	California	Colorado
2002-A	10/17/02	\$308,902	\$4,224,755	\$1,465,377	\$8,161,638	\$47,039,720	\$9,528,503
2003-A	03/13/03	\$850,659	\$7,645,302	\$1,889,174	\$17,555,873	\$163,441,271	\$13,318,730
2003-B	06/27/03	\$1,111,057	\$11,088,256	\$3,172,334	\$21,032,547	\$171,544,550	\$16,137,900
2003-C	10/09/03	\$774,181	\$7,786,577	\$2,729,723	\$24,457,368	\$184,780,002	\$13,519,348
2004-A	03/25/04	\$856,072	\$12,949,527	\$4,270,355	\$22,245,697	\$169,600,852	\$15,762,812
2004-B	05/26/04	\$476,709	\$10,090,799	\$3,985,228	\$15,859,402	\$145,143,137	\$13,804,014
2005-A	04/28/05	\$952,019	\$14,685,232	\$4,885,390	\$19,700,898	\$181,888,194	\$15,129,383
2005-B	10/27/05	\$784,996	\$-	\$4,782,778	\$16,106,871	\$143,261,184	\$17,991,173

TRANSACTION TYPE: PRIVATE CREDIT

ORIGINAL POOL CHARACTERISTICS AS OF STATISTICAL CUTOFF DATE

SLM Student Loan Trust 2006-A

GEOGRAPHIC DISTRIBUTION OF THE INITIAL TRUST STUDENT LOANS AS OF THE STATISTICAL CUTOFF DATE

Issue	Settlement Date	Aggregate Outstanding Principal Balance					
		Connecticut	Delaware	DC	Florida	Georgia	Hawaii
2002-A	10/17/02	\$17,289,327	\$1,862,593	\$7,067,760	\$24,735,451	\$20,978,705	\$619,468
2003-A	03/13/03	\$22,701,181	\$3,014,607	\$10,141,078	\$63,676,610	\$25,317,146	\$2,489,052
2003-B	06/27/03	\$28,317,689	\$3,461,140	\$9,814,577	\$76,247,195	\$30,845,026	\$3,512,003
2003-C	10/09/03	\$29,226,367	\$3,671,315	\$11,363,221	\$89,829,743	\$27,667,962	\$2,836,174
2004-A	03/25/04	\$20,784,442	\$3,434,152	\$11,433,924	\$101,960,292	\$32,851,033	\$3,404,653
2004-B	05/26/04	\$35,184,858	\$5,819,154	\$9,183,121	\$73,744,689	\$28,513,489	\$3,527,105
2005-A	04/28/05	\$34,395,047	\$6,305,382	\$7,112,997	\$98,878,094	\$34,079,552	\$3,516,919
2005-B	10/27/05	\$42,730,378	\$5,307,721	\$7,068,027	\$84,034,368	\$32,403,151	\$4,067,630

TRANSACTION TYPE: PRIVATE CREDIT

ORIGINAL POOL CHARACTERISTICS AS OF STATISTICAL CUTOFF DATE

SLM Student Loan Trust 2006-A

GEOGRAPHIC DISTRIBUTION OF THE INITIAL TRUST STUDENT LOANS AS OF THE STATISTICAL CUTOFF DATE

Issue	Settlement Date	Aggregate Outstanding Principal Balance					
		Iowa	Idaho	Illinois	Indiana	Kansas	Kentucky
2002-A	10/17/02	\$1,672,981	\$758,469	\$29,630,028	\$9,500,177	\$2,669,775	\$3,522,037
2003-A	03/13/03	\$3,326,213	\$2,072,424	\$38,394,534	\$13,310,504	\$3,809,312	\$4,327,215
2003-B	06/27/03	\$5,220,476	\$2,484,163	\$56,601,293	\$22,240,787	\$7,180,245	\$6,210,779
2003-C	10/09/03	\$3,923,609	\$1,817,901	\$53,047,039	\$21,743,735	\$4,811,457	\$5,152,388
2004-A	03/25/04	\$4,722,677	\$1,829,437	\$60,893,908	\$25,459,142	\$6,561,396	\$8,458,579
2004-B	05/26/04	\$4,514,343	\$2,016,983	\$62,849,352	\$32,318,094	\$9,486,610	\$5,882,590
2005-A	04/28/05	\$6,469,351	\$1,736,759	\$83,988,058	\$32,935,948	\$9,505,512	\$10,078,880
2005-B	10/27/05	\$5,372,305	\$2,166,234	\$93,548,238	\$45,427,506	\$8,671,434	\$7,578,486

TRANSACTION TYPE: PRIVATE CREDIT

ORIGINAL POOL CHARACTERISTICS AS OF STATISTICAL CUTOFF DATE

SLM Student Loan Trust 2006-A

GEOGRAPHIC DISTRIBUTION OF THE INITIAL TRUST STUDENT LOANS AS OF THE STATISTICAL CUTOFF DATE

Issue	Settlement Date	Aggregate Outstanding Principal Balance					
		Louisiana	Massachusetts	Maryland	Maine	Michigan	Minnesota
2002-A	10/17/02	\$7,819,417	\$38,996,881	\$20,698,557	\$3,093,537	\$13,714,755	\$6,124,005
2003-A	03/13/03	\$8,606,131	\$47,781,698	\$27,110,791	\$4,770,462	\$22,004,968	\$10,359,351
2003-B	06/27/03	\$12,199,579	\$53,945,307	\$33,600,458	\$5,680,196	\$28,876,440	\$12,899,036
2003-C	10/09/03	\$12,123,609	\$62,074,691	\$26,953,749	\$5,888,051	\$29,753,425	\$9,568,719
2004-A	03/25/04	\$16,750,366	\$57,492,025	\$31,170,424	\$4,849,792	\$35,732,475	\$12,799,630
2004-B	05/26/04	\$11,830,401	\$64,801,804	\$31,546,021	\$6,567,752	\$29,234,784	\$9,296,322
2005-A	04/28/05	\$14,986,900	\$82,590,611	\$35,214,777	\$9,438,550	\$39,541,769	\$17,772,261
2005-B	10/27/05	\$-	\$84,977,975	\$33,585,314	\$8,009,665	\$49,998,670	\$16,070,534

TRANSACTION TYPE: PRIVATE CREDIT

ORIGINAL POOL CHARACTERISTICS AS OF STATISTICAL CUTOFF DATE

SLM Student Loan Trust 2006-A

GEOGRAPHIC DISTRIBUTION OF THE INITIAL TRUST STUDENT LOANS AS OF THE STATISTICAL CUTOFF DATE

Issue	Settlement Date	Aggregate Outstanding Principal Balance					
		Missouri	Mississippi	Montana	North Carolina	North Dakota	Nebraska
2002-A	10/17/02	\$6,740,413	\$2,063,687	\$633,308	\$19,313,874	\$576,811	\$1,126,794
2003-A	03/13/03	\$10,491,680	\$2,996,606	\$1,266,511	\$16,534,684	\$597,831	\$2,070,468
2003-B	06/27/03	\$18,299,596	\$4,026,209	\$1,705,179	\$20,876,686	\$719,251	\$2,806,517
2003-C	10/09/03	\$11,927,475	\$3,606,905	\$1,197,634	\$27,386,549	\$711,717	\$2,005,278
2004-A	03/25/04	\$14,861,829	\$3,834,679	\$1,308,391	\$26,061,733	\$1,140,560	\$2,477,006
2004-B	05/26/04	\$15,088,887	\$3,774,338	\$1,362,360	\$28,265,179	\$648,670	\$1,620,781
2005-A	04/28/05	\$18,444,317	\$4,137,117	\$1,498,772	\$24,327,691	\$806,334	\$2,748,607
2005-B	10/27/05	\$14,901,675	\$-	\$1,593,509	\$27,383,480	\$697,216	\$1,733,028

TRANSACTION TYPE: PRIVATE CREDIT

ORIGINAL POOL CHARACTERISTICS AS OF STATISTICAL CUTOFF DATE

SLM Student Loan Trust 2006-A

GEOGRAPHIC DISTRIBUTION OF THE INITIAL TRUST STUDENT LOANS AS OF THE STATISTICAL CUTOFF DATE

Issue	Settlement Date	Aggregate Outstanding Principal Balance					
		New Hampshire	New Jersey	New Mexico	Nevada	New York	Ohio
2002-A	10/17/02	\$5,335,676	\$48,096,166	\$1,120,874	\$2,111,890	\$148,625,606	\$20,628,512
2003-A	03/13/03	\$7,400,622	\$53,593,907	\$2,062,345	\$5,770,395	\$145,837,734	\$28,754,880
2003-B	06/27/03	\$8,730,332	\$66,083,884	\$2,140,234	\$5,733,334	\$161,744,629	\$44,951,238
2003-C	10/09/03	\$9,215,954	\$59,099,934	\$2,032,663	\$4,508,390	\$190,204,603	\$44,240,644
2004-A	03/25/04	\$10,463,306	\$55,163,891	\$2,331,297	\$5,453,116	\$130,485,759	\$44,027,483
2004-B	05/26/04	\$10,046,433	\$64,267,484	\$1,894,160	\$3,209,802	\$192,563,502	\$53,239,406
2005-A	04/28/05	\$16,964,418	\$80,491,747	\$2,435,343	\$8,135,050	\$183,094,614	\$65,333,701
2005-B	10/27/05	\$15,144,073	\$87,257,690	\$1,788,704	\$5,491,095	\$192,779,598	\$95,149,390

TRANSACTION TYPE: PRIVATE CREDIT

ORIGINAL POOL CHARACTERISTICS AS OF STATISTICAL CUTOFF DATE

SLM Student Loan Trust 2006-A

GEOGRAPHIC DISTRIBUTION OF THE INITIAL TRUST STUDENT LOANS AS OF THE STATISTICAL CUTOFF DATE

Issue	Settlement Date	Aggregate Outstanding Principal Balance					
		Oklahoma	Oregon	Pennsylvania	Rhode Island	South Carolina	South Dakota
2002-A	10/17/02	\$6,804,071	\$8,079,751	\$38,699,415	\$5,281,073	\$4,383,451	\$502,606
2003-A	03/13/03	\$5,218,655	\$12,439,670	\$56,335,054	\$6,743,629	\$5,930,516	\$707,155
2003-B	06/27/03	\$8,743,369	\$15,190,550	\$82,773,644	\$6,951,032	\$8,787,248	\$1,076,959
2003-C	10/09/03	\$10,003,311	\$14,423,746	\$64,546,936	\$7,345,493	\$5,582,303	\$657,018
2004-A	03/25/04	\$9,244,970	\$13,592,143	\$80,622,072	\$7,882,525	\$9,627,388	\$1,057,334
2004-B	05/26/04	\$11,133,042	\$10,297,349	\$102,156,482	\$6,182,873	\$7,894,371	\$806,851
2005-A	04/28/05	\$9,249,355	\$15,815,558	\$111,679,347	\$8,304,617	\$9,187,602	\$1,167,289
2005-B	10/27/05	\$14,550,363	\$15,054,664	\$94,280,540	\$9,319,408	\$10,423,616	\$649,472

TRANSACTION TYPE: PRIVATE CREDIT

ORIGINAL POOL CHARACTERISTICS AS OF STATISTICAL CUTOFF DATE

SLM Student Loan Trust 2006-A

GEOGRAPHIC DISTRIBUTION OF THE INITIAL TRUST STUDENT LOANS AS OF THE STATISTICAL CUTOFF DATE

Issue	Settlement Date	Aggregate Outstanding Principal Balance					
		Tennessee	Texas	Utah	Virginia	Vermont	Washington
2002-A	10/17/02	\$10,187,470	\$31,022,514	\$1,278,116	\$21,379,529	\$1,816,289	\$11,074,139
2003-A	03/13/03	\$9,269,664	\$42,336,380	\$2,535,093	\$27,415,968	\$1,672,387	\$18,664,461
2003-B	06/27/03	\$14,837,066	\$61,029,830	\$3,665,861	\$33,237,809	\$2,287,151	\$22,202,101
2003-C	10/09/03	\$13,500,173	\$52,360,697	\$2,818,413	\$31,094,468	\$2,213,357	\$23,919,629
2004-A	03/25/04	\$16,371,541	\$51,097,134	\$3,660,840	\$35,575,035	\$2,271,283	\$22,570,289
2004-B	05/26/04	\$17,848,488	\$56,166,186	\$2,985,173	\$33,315,603	\$2,944,525	\$16,006,500
2005-A	04/28/05	\$18,538,881	\$54,673,656	\$4,353,015	\$35,153,163	\$3,161,710	\$23,519,704
2005-B	10/27/05	\$17,217,631	\$71,049,022	\$4,439,909	\$38,242,885	\$2,656,459	\$25,643,313

TRANSACTION TYPE: PRIVATE CREDIT

ORIGINAL POOL CHARACTERISTICS AS OF STATISTICAL CUTOFF DATE

SLM Student Loan Trust 2006-A

GEOGRAPHIC DISTRIBUTION OF THE INITIAL TRUST STUDENT LOANS AS OF THE STATISTICAL CUTOFF DATE

Aggregate Outstanding Principal Balance

Issue	Settlement Date	Aggregate Outstanding Principal Balance				Total
		West Virginia	Wisconsin	Wyoming	Other	
2002-A	10/17/02	\$2,135,452	\$5,880,941	\$346,771	\$3,606,372	\$690,334,386
2003-A	03/13/03	\$3,029,528	\$7,986,762	\$452,833	\$9,150,473	\$1,005,180,179
2003-B	06/27/03	\$4,839,727	\$10,132,203	\$704,692	\$9,580,953	\$1,247,280,318
2003-C	10/09/03	\$4,114,556	\$11,369,286	\$674,867	\$13,703,711	\$1,249,966,061
2004-A	03/25/04	\$5,798,631	\$12,560,563	\$821,325	\$15,522,507	\$1,252,158,292
2004-B	05/26/04	\$5,689,336	\$9,426,506	\$638,085	\$7,425,307	\$1,282,574,440
2005-A	04/28/05	\$6,928,419	\$15,332,073	\$794,376	\$12,998,722	\$1,505,063,683
2005-B	10/27/05	\$7,865,385	\$19,103,768	\$720,326	\$11,074,107	\$1,500,154,963

TRANSACTION TYPE: PRIVATE CREDIT

ORIGINAL POOL CHARACTERISTICS AS OF STATISTICAL CUTOFF DATE

SLM Student Loan Trust 2006-A

GEOGRAPHIC DISTRIBUTION OF THE INITIAL TRUST STUDENT LOANS AS OF THE STATISTICAL CUTOFF DATE

Percent of Pool By Outstanding Principal Balance

Issue	Settlement Date	Alaska	Alabama	Arkansas	Arizona	California	Colorado
2002-A	10/17/02	- %	0.6%	0.2%	1.2%	6.8%	1.4%
2003-A	03/13/03	0.1%	0.8%	0.2%	1.7%	16.3%	1.3%
2003-B	06/27/03	0.1%	0.9%	0.3%	1.7%	13.8%	1.3%
2003-C	10/09/03	0.1%	0.6%	0.2%	2.0%	14.8%	1.1%
2004-A	03/25/04	0.1%	1.0%	0.3%	1.8%	13.5%	1.3%
2004-B	05/26/04	- %	0.8%	0.3%	1.2%	11.3%	1.1%
2005-A	04/28/05	0.1%	1.0%	0.3%	1.3%	12.1%	1.0%
2005-B	10/27/05	0.1%	- %	0.3%	1.1%	9.5%	1.2%

TRANSACTION TYPE: PRIVATE CREDIT

ORIGINAL POOL CHARACTERISTICS AS OF STATISTICAL CUTOFF DATE

SLM Student Loan Trust 2006-A

GEOGRAPHIC DISTRIBUTION OF THE INITIAL TRUST STUDENT LOANS AS OF THE STATISTICAL CUTOFF DATE

Percent of Pool By Outstanding Principal Balance

Issue	Settlement Date	Connecticut	Delaware	DC	Florida	Georgia	Hawaii
2002-A	10/17/02	2.5%	0.3%	1.0%	3.6%	3.0%	0.1%
2003-A	03/13/03	2.3%	0.3%	1.0%	6.3%	2.5%	0.2%
2003-B	06/27/03	2.3%	0.3%	0.8%	6.1%	2.5%	0.3%
2003-C	10/09/03	2.3%	0.3%	0.9%	7.2%	2.2%	0.2%
2004-A	03/25/04	1.7%	0.3%	0.9%	8.1%	2.6%	0.3%
2004-B	05/26/04	2.7%	0.5%	0.7%	5.7%	2.2%	0.3%
2005-A	04/28/05	2.3%	0.4%	0.5%	6.6%	2.3%	0.2%
2005-B	10/27/05	2.8%	0.4%	0.5%	5.6%	2.2%	0.3%

TRANSACTION TYPE: PRIVATE CREDIT

ORIGINAL POOL CHARACTERISTICS AS OF STATISTICAL CUTOFF DATE

SLM Student Loan Trust 2006-A

GEOGRAPHIC DISTRIBUTION OF THE INITIAL TRUST STUDENT LOANS AS OF THE STATISTICAL CUTOFF DATE

Percent of Pool By Outstanding Principal Balance

Issue	Settlement Date	Iowa	Idaho	Illinois	Indiana	Kansas	Kentucky
2002-A	10/17/02	0.2%	0.1%	4.3%	1.4%	0.4%	0.5%
2003-A	03/13/03	0.3%	0.2%	3.8%	1.3%	0.4%	0.4%
2003-B	06/27/03	0.4%	0.2%	4.5%	1.8%	0.6%	0.5%
2003-C	10/09/03	0.3%	0.1%	4.2%	1.7%	0.4%	0.4%
2004-A	03/25/04	0.4%	0.1%	4.9%	2.0%	0.5%	0.7%
2004-B	05/26/04	0.4%	0.2%	4.9%	2.5%	0.7%	0.5%
2005-A	04/28/05	0.4%	0.1%	5.6%	2.2%	0.6%	0.7%
2005-B	10/27/05	0.4%	0.1%	6.2%	3.0%	0.6%	0.5%

TRANSACTION TYPE: PRIVATE CREDIT

ORIGINAL POOL CHARACTERISTICS AS OF STATISTICAL CUTOFF DATE

SLM Student Loan Trust 2006-A

GEOGRAPHIC DISTRIBUTION OF THE INITIAL TRUST STUDENT LOANS AS OF THE STATISTICAL CUTOFF DATE

Percent of Pool By Outstanding Principal Balance

Issue	Settlement Date	Louisiana	Massachusetts	Maryland	Maine	Michigan	Minnesota
2002-A	10/17/02	1.1%	5.6%	3.0%	0.4%	2.0%	0.9%
2003-A	03/13/03	0.9%	4.8%	2.7%	0.5%	2.2%	1.0%
2003-B	06/27/03	1.0%	4.3%	2.7%	0.5%	2.3%	1.0%
2003-C	10/09/03	1.0%	5.0%	2.2%	0.5%	2.4%	0.8%
2004-A	03/25/04	1.3%	4.6%	2.5%	0.4%	2.9%	1.0%
2004-B	05/26/04	0.9%	5.1%	2.5%	0.5%	2.3%	0.7%
2005-A	04/28/05	1.0%	5.5%	2.3%	0.6%	2.6%	1.2%
2005-B	10/27/05	- %	5.7%	2.2%	0.5%	3.3%	1.1%

TRANSACTION TYPE: PRIVATE CREDIT

ORIGINAL POOL CHARACTERISTICS AS OF STATISTICAL CUTOFF DATE

SLM Student Loan Trust 2006-A

GEOGRAPHIC DISTRIBUTION OF THE INITIAL TRUST STUDENT LOANS AS OF THE STATISTICAL CUTOFF DATE

Percent of Pool By Outstanding Principal Balance

Issue	Settlement Date	Missouri	Mississippi	Montana	North Carolina	North Dakota	Nebraska
2002-A	10/17/02	1.0%	0.3%	0.1%	2.8%	0.1%	0.2%
2003-A	03/13/03	1.0%	0.3%	0.1%	1.6%	0.1%	0.2%
2003-B	06/27/03	1.5%	0.3%	0.1%	1.7%	0.1%	0.2%
2003-C	10/09/03	1.0%	0.3%	0.1%	2.2%	0.1%	0.2%
2004-A	03/25/04	1.2%	0.3%	0.1%	2.1%	0.1%	0.2%
2004-B	05/26/04	1.2%	0.3%	0.1%	2.2%	0.1%	0.1%
2005-A	04/28/05	1.2%	0.3%	0.1%	1.6%	0.1%	0.2%
2005-B	10/27/05	1.0%	- %	0.1%	1.8%	- %	0.1%

TRANSACTION TYPE: PRIVATE CREDIT

ORIGINAL POOL CHARACTERISTICS AS OF STATISTICAL CUTOFF DATE

SLM Student Loan Trust 2006-A

GEOGRAPHIC DISTRIBUTION OF THE INITIAL TRUST STUDENT LOANS AS OF THE STATISTICAL CUTOFF DATE

Percent of Pool By Outstanding Principal Balance

Issue	Settlement Date	New Hampshire	New Jersey	New Mexico	Nevada	New York	Ohio
2002-A	10/17/02	0.8%	7.0%	0.2%	0.3%	21.5%	3.0%
2003-A	03/13/03	0.7%	5.3%	0.2%	0.6%	14.5%	2.9%
2003-B	06/27/03	0.7%	5.3%	0.2%	0.5%	13.0%	3.6%
2003-C	10/09/03	0.7%	4.7%	0.2%	0.4%	15.2%	3.5%
2004-A	03/25/04	0.8%	4.4%	0.2%	0.4%	10.4%	3.5%
2004-B	05/26/04	0.8%	5.0%	0.1%	0.3%	15.0%	4.2%
2005-A	04/28/05	1.1%	5.3%	0.2%	0.5%	12.2%	4.3%
2005-B	10/27/05	1.0%	5.8%	0.1%	0.4%	12.9%	6.3%

TRANSACTION TYPE: PRIVATE CREDIT

ORIGINAL POOL CHARACTERISTICS AS OF STATISTICAL CUTOFF DATE

SLM Student Loan Trust 2006-A

GEOGRAPHIC DISTRIBUTION OF THE INITIAL TRUST STUDENT LOANS AS OF THE STATISTICAL CUTOFF DATE

Percent of Pool By Outstanding Principal Balance

Issue	Settlement Date	Oklahoma	Oregon	Pennsylvania	Rhode Island	South Carolina	South Dakota
2002-A	10/17/02	1.0%	1.2%	5.6%	0.8%	0.6%	0.1%
2003-A	03/13/03	0.5%	1.2%	5.6%	0.7%	0.6%	0.1%
2003-B	06/27/03	0.7%	1.2%	6.6%	0.6%	0.7%	0.1%
2003-C	10/09/03	0.8%	1.2%	5.2%	0.6%	0.4%	0.1%
2004-A	03/25/04	0.7%	1.1%	6.4%	0.6%	0.8%	0.1%
2004-B	05/26/04	0.9%	0.8%	8.0%	0.5%	0.6%	0.1%
2005-A	04/28/05	0.6%	1.1%	7.4%	0.6%	0.6%	0.1%
2005-B	10/27/05	1.0%	1.0%	6.3%	0.6%	0.7%	- %

TRANSACTION TYPE: PRIVATE CREDIT

ORIGINAL POOL CHARACTERISTICS AS OF STATISTICAL CUTOFF DATE

SLM Student Loan Trust 2006-A

GEOGRAPHIC DISTRIBUTION OF THE INITIAL TRUST STUDENT LOANS AS OF THE STATISTICAL CUTOFF DATE

Percent of Pool By Outstanding Principal Balance

Issue	Settlement Date	Percent of Pool By Outstanding Principal Balance					
		Tennessee	Texas	Utah	Virginia	Vermont	Washington
2002-A	10/17/02	1.5%	4.5%	0.2%	3.1%	0.3%	1.6%
2003-A	03/13/03	0.9%	4.2%	0.3%	2.7%	0.2%	1.9%
2003-B	06/27/03	1.2%	4.9%	0.3%	2.7%	0.2%	1.8%
2003-C	10/09/03	1.1%	4.2%	0.2%	2.5%	0.2%	1.9%
2004-A	03/25/04	1.3%	4.1%	0.3%	2.8%	0.2%	1.8%
2004-B	05/26/04	1.4%	4.4%	0.2%	2.6%	0.2%	1.2%
2005-A	04/28/05	1.2%	3.6%	0.3%	2.3%	0.2%	1.6%
2005-B	10/27/05	1.1%	4.7%	0.3%	2.5%	0.2%	1.7%

TRANSACTION TYPE: PRIVATE CREDIT

ORIGINAL POOL CHARACTERISTICS AS OF STATISTICAL CUTOFF DATE

SLM Student Loan Trust 2006-A

GEOGRAPHIC DISTRIBUTION OF THE INITIAL TRUST STUDENT LOANS AS OF THE STATISTICAL CUTOFF DATE

Percent of Pool By Outstanding Principal Balance

Issue	Settlement Date	West Virginia	Wisconsin	Wyoming	Other	Total
2002-A	10/17/02	0.3%	0.9%	0.1%	0.5%	100.0%
2003-A	03/13/03	0.3%	0.8%	- %	0.9%	100.0%
2003-B	06/27/03	0.4%	0.8%	0.1%	0.8%	100.0%
2003-C	10/09/03	0.3%	0.9%	0.1%	1.1%	100.0%
2004-A	03/25/04	0.5%	1.0%	0.1%	1.2%	100.0%
2004-B	05/26/04	0.4%	0.7%	- %	0.6%	100.0%
2005-A	04/28/05	0.5%	1.0%	0.1%	0.9%	100.0%
2005-B	10/27/05	0.5%	1.3%	- %	0.7%	100.0%

TRANSACTION TYPE: PRIVATE CREDIT

ORIGINAL POOL CHARACTERISTICS AS OF STATISTICAL CUTOFF DATE

SLM Student Loan Trust 2006-A

DISTRIBUTION OF FICO CREDIT SCORES AS OF A DATE NEAR THE LOAN APPLICATION - ALL BORROWERS AND CO-BORROWERS

		Aggregate Outstanding Principal Balance								
		FICO Score								
Issue	Settlement Date	Less than 630	630 - 639	640 - 649	650 - 659	660 - 669	670 - 679	680 - 689	690 - 699	700 - 709
2002-A	10/17/02	\$-	\$26,463,948	\$28,273,773	\$29,269,731	\$32,733,462	\$32,608,085	\$34,621,242	\$35,403,707	\$41,074,846
2003-A	03/13/03	\$98,885	\$27,984,724	\$38,509,259	\$39,743,277	\$39,376,084	\$43,009,743	\$42,554,150	\$42,063,752	\$46,892,688
2003-B	06/27/03	\$46,350	\$13,492,570	\$53,898,104	\$55,938,191	\$55,327,491	\$57,183,669	\$58,557,261	\$55,221,943	\$67,966,753
2003-C	10/09/03	\$4,702,037	\$16,710,764	\$55,313,486	\$53,110,605	\$54,741,567	\$57,612,058	\$57,989,977	\$57,241,911	\$69,722,941
2004-A	03/25/04	\$4,801,591	\$13,351,874	\$47,094,877	\$47,911,572	\$46,606,434	\$49,494,328	\$49,134,845	\$45,015,404	\$53,409,059
2004-B	05/26/04	\$2,537,872	\$7,374,271	\$66,494,084	\$72,199,494	\$64,286,528	\$71,037,542	\$71,751,989	\$66,050,874	\$83,618,648
2005-A	04/28/05	\$1,122,017	\$15,860,443	\$88,160,630	\$89,600,287	\$79,328,526	\$89,971,038	\$89,226,773	\$80,827,109	\$107,179,161
2005-B	10/27/05	\$1,372,145	\$9,219,815	\$79,748,658	\$83,106,494	\$83,371,881	\$91,020,494	\$90,303,812	\$84,210,413	\$107,109,122

		Aggregate Outstanding Principal Balance								
		FICO Score								
Issue	Settlement Date	710 - 719	720 - 729	730 - 739	740 - 749	750 - 759	760 - 769	770 - 779	780 - 789	790 - 799
2002-A	10/17/02	\$38,200,348	\$37,613,580	\$37,974,550	\$37,277,409	\$35,696,544	\$36,225,285	\$33,364,844	\$31,119,221	\$23,082,322
2003-A	03/13/03	\$43,981,729	\$43,109,209	\$39,362,663	\$38,935,283	\$38,613,473	\$36,255,772	\$34,377,794	\$30,179,809	\$25,988,267
2003-B	06/27/03	\$63,669,808	\$58,500,174	\$56,922,003	\$54,875,133	\$54,980,805	\$55,864,512	\$53,706,379	\$51,449,514	\$43,418,732
2003-C	10/09/03	\$64,406,438	\$63,309,195	\$61,445,308	\$61,598,628	\$59,206,877	\$61,302,665	\$57,971,245	\$55,005,920	\$42,549,154
2004-A	03/25/04	\$53,294,526	\$50,223,780	\$48,651,952	\$46,069,692	\$44,523,137	\$42,426,012	\$40,817,409	\$37,168,004	\$32,314,111
2004-B	05/26/04	\$80,362,964	\$79,779,600	\$74,478,022	\$76,856,124	\$81,196,350	\$72,680,643	\$65,645,748	\$61,963,052	\$57,444,764
2005-A	04/28/05	\$99,923,779	\$95,134,419	\$89,933,710	\$94,066,056	\$93,525,646	\$81,573,290	\$74,449,649	\$65,118,712	\$56,823,134
2005-B	10/27/05	\$101,374,644	\$96,251,189	\$93,472,272	\$93,261,288	\$91,024,079	\$81,263,771	\$77,095,997	\$73,522,240	\$63,160,163

TRANSACTION TYPE: PRIVATE CREDIT

ORIGINAL POOL CHARACTERISTICS AS OF STATISTICAL CUTOFF DATE

SLM Student Loan Trust 2006-A

DISTRIBUTION OF FICO CREDIT SCORES AS OF A DATE NEAR THE LOAN APPLICATION - ALL BORROWERS AND CO-BORROWERS

		Aggregate Outstanding Principal Balance							
		FICO Score							
Issue	Settlement Date	800 - 809	810 - 819	820 - 829	830 - 839	840 - 849	850 & Greater	Other	Total
2002-A	10/17/02	\$12,505,053	\$3,693,329	\$239,067	\$57,712	\$-	\$-	\$102,836,328	\$690,334,386
2003-A	03/13/03	\$14,574,615	\$3,701,787	\$388,842	\$99,366	\$-	\$10,127	\$335,368,882	\$1,005,180,179
2003-B	06/27/03	\$22,595,681	\$5,498,250	\$605,101	\$132,125	\$13,708	\$-	\$307,416,059	\$1,247,280,318
2003-C	10/09/03	\$23,530,217	\$5,828,737	\$365,398	\$152,411	\$5,191	\$10,695	\$266,132,638	\$1,249,966,061
2004-A	03/25/04	\$15,020,036	\$4,223,107	\$458,241	\$84,581	\$-	\$34,177	\$480,029,541	\$1,252,158,292
2004-B	05/26/04	\$19,725,213	\$6,214,324	\$416,057	\$-	\$15,263	\$10,762	\$100,434,254	\$1,282,574,440
2005-A	04/28/05	\$24,368,298	\$8,700,912	\$446,270	\$-	\$-	\$39,869	\$79,683,957	\$1,505,063,683
2005-B	10/27/05	\$39,044,662	\$19,514,915	\$264,236	\$3,139	\$-	\$-	\$41,439,534	\$1,500,154,963

TRANSACTION TYPE: PRIVATE CREDIT

ORIGINAL POOL CHARACTERISTICS AS OF STATISTICAL CUTOFF DATE

SLM Student Loan Trust 2006-A

DISTRIBUTION OF FICO CREDIT SCORES AS OF A DATE NEAR THE LOAN APPLICATION - ALL BORROWERS AND CO-BORROWERS

Percent of Pool By Outstanding Principal Balance

Issue	Settlement Date	FICO Score													
		Less than 630	630 - 639	640 - 649	650 - 659	660 - 669	670 - 679	680 - 689	690 - 699	700 - 709	710 - 719	720 - 729	730 - 739	740 - 749	750 - 759
2002-A	10/17/02	- %	3.8%	4.1%	4.2%	4.7%	4.7%	5.0%	5.1%	5.9%	5.5%	5.4%	5.5%	5.4%	5.2%
2003-A	03/13/03	- %	2.8%	3.8%	4.0%	3.9%	4.3%	4.2%	4.2%	4.7%	4.4%	4.3%	3.9%	3.9%	3.8%
2003-B	06/27/03	- %	1.1%	4.3%	4.5%	4.4%	4.6%	4.7%	4.4%	5.4%	5.1%	4.7%	4.6%	4.4%	4.4%
2003-C	10/09/03	0.4%	1.3%	4.4%	4.2%	4.4%	4.6%	4.6%	4.6%	5.6%	5.2%	5.1%	4.9%	4.9%	4.7%
2004-A	03/25/04	0.4%	1.1%	3.8%	3.8%	3.7%	4.0%	3.9%	3.6%	4.3%	4.3%	4.0%	3.9%	3.7%	3.6%
2004-B	05/26/04	0.2%	0.6%	5.2%	5.6%	5.0%	5.5%	5.6%	5.1%	6.5%	6.3%	6.2%	5.8%	6.0%	6.3%
2005-A	04/28/05	0.1%	1.1%	5.9%	6.0%	5.3%	6.0%	5.9%	5.4%	7.1%	6.6%	6.3%	6.0%	6.2%	6.2%
2005-B	10/27/05	0.1%	0.6%	5.3%	5.5%	5.6%	6.1%	6.0%	5.6%	7.1%	6.8%	6.4%	6.2%	6.2%	6.1%

TRANSACTION TYPE: PRIVATE CREDIT

ORIGINAL POOL CHARACTERISTICS AS OF STATISTICAL CUTOFF DATE

SLM Student Loan Trust 2006-A

DISTRIBUTION OF FICO CREDIT SCORES AS OF A DATE NEAR THE LOAN APPLICATION - ALL BORROWERS AND CO-BORROWERS

Percent of Pool By Outstanding Principal Balance

Issue	Settlement Date	FICO Score											Total
		760 - 769	770 - 779	780 - 789	790 - 799	800 - 809	810 - 819	820 - 829	830 - 839	840 - 849	850 & Greater	Other	
2002-A	10/17/02	5.2%	4.8%	4.5%	3.3%	1.8%	0.5%	- %	- %	- %	- %	14.9%	100.0%
2003-A	03/13/03	3.6%	3.4%	3.0%	2.6%	1.4%	0.4%	- %	- %	- %	- %	33.4%	100.0%
2003-B	06/27/03	4.5%	4.3%	4.1%	3.5%	1.8%	0.4%	- %	- %	- %	- %	24.6%	100.0%
2003-C	10/09/03	4.9%	4.6%	4.4%	3.4%	1.9%	0.5%	- %	- %	- %	- %	21.3%	100.0%
2004-A	03/25/04	3.4%	3.3%	3.0%	2.6%	1.2%	0.3%	- %	- %	- %	- %	38.3%	100.0%
2004-B	05/26/04	5.7%	5.1%	4.8%	4.5%	1.5%	0.5%	- %	- %	- %	- %	7.8%	100.0%
2005-A	04/28/05	5.4%	4.9%	4.3%	3.8%	1.6%	0.6%	- %	- %	- %	- %	5.3%	100.0%
2005-B	10/27/05	5.4%	5.1%	4.9%	4.2%	2.6%	1.3%	- %	- %	- %	- %	2.8%	100.0%

		Aggregate Outstanding Principal Balance								
		FICO Score								
Issue	Settlement Date	Less than 630	630 - 639	640 - 649	650 - 659	660 - 669	670 - 679	680 - 689	690 - 699	700 - 709
2002-A	10/17/02	\$-	\$5,884,204	\$7,454,184	\$8,030,871	\$10,328,365	\$9,650,647	\$10,808,529	\$12,378,068	\$17,785,806
2003-A	03/13/03	\$-	\$8,026,629	\$11,919,071	\$13,838,485	\$13,898,504	\$15,314,203	\$15,565,335	\$17,493,170	\$25,910,098
2003-B	06/27/03	\$-	\$3,993,007	\$16,532,362	\$18,816,958	\$19,502,789	\$19,884,958	\$23,339,195	\$23,437,067	\$38,852,397
2003-C	10/09/03	\$261,507	\$4,059,003	\$16,466,894	\$16,708,229	\$17,214,382	\$19,343,057	\$19,735,296	\$22,061,428	\$35,786,318
2004-A	03/25/04	\$576,136	\$2,864,109	\$11,268,533	\$12,673,608	\$13,856,354	\$14,834,157	\$15,573,432	\$16,286,946	\$27,450,289
2004-B	05/26/04	\$348,824	\$1,160,434	\$17,642,835	\$17,828,670	\$19,469,432	\$22,118,712	\$22,888,146	\$25,337,550	\$43,417,947
2005-A	04/28/05	\$-	\$2,335,234	\$15,313,863	\$17,088,279	\$18,502,803	\$21,498,675	\$22,573,396	\$24,504,111	\$51,125,091
2005-B	10/27/05	\$-	\$2,107,475	\$15,231,355	\$17,835,656	\$21,261,455	\$23,079,385	\$24,672,660	\$26,966,054	\$51,122,963

		Aggregate Outstanding Principal Balance								
		FICO Score								
Issue	Settlement Date	710 - 719	720 - 729	730 - 739	740 - 749	750 - 759	760 - 769	770 - 779	780 - 789	790 - 799
2002-A	10/17/02	\$17,326,149	\$17,720,693	\$18,498,277	\$18,185,408	\$17,500,710	\$20,713,235	\$21,428,050	\$22,798,777	\$19,730,831
2003-A	03/13/03	\$24,841,633	\$25,680,421	\$23,939,006	\$25,164,729	\$26,269,699	\$26,784,634	\$28,148,846	\$26,422,811	\$23,981,394
2003-B	06/27/03	\$39,072,148	\$36,800,722	\$37,403,168	\$36,920,694	\$39,185,520	\$43,047,747	\$44,990,327	\$46,031,356	\$40,698,565
2003-C	10/09/03	\$34,457,240	\$34,010,572	\$35,749,756	\$36,677,640	\$36,586,153	\$40,244,935	\$42,794,847	\$43,502,442	\$37,539,941
2004-A	03/25/04	\$28,230,585	\$27,346,930	\$28,354,110	\$27,821,016	\$29,841,533	\$31,279,830	\$31,825,100	\$31,499,395	\$29,559,220
2004-B	05/26/04	\$43,474,524	\$45,680,191	\$43,227,906	\$46,650,255	\$54,462,392	\$54,526,914	\$52,627,158	\$53,202,941	\$52,705,589
2005-A	04/28/05	\$49,464,387	\$49,968,404	\$51,031,115	\$55,458,029	\$63,750,588	\$60,971,728	\$60,566,284	\$56,367,649	\$52,184,000
2005-B	10/27/05	\$51,200,846	\$51,339,633	\$53,106,265	\$56,139,838	\$62,369,068	\$62,037,484	\$64,306,888	\$64,326,067	\$57,571,564

TRANSACTION TYPE: PRIVATE CREDIT

ORIGINAL POOL CHARACTERISTICS AS OF STATISTICAL CUTOFF DATE

SLM Student Loan Trust 2006-A

DISTRIBUTION OF FICO CREDIT SCORES AS OF A DATE NEAR THE LOAN APPLICATION - CO-BORROWER LOANS

		Aggregate Outstanding Principal Balance							
		FICO Score							Total
Issue	Settlement Date	800 - 809	810 - 819	820 - 829	830 - 839	840 - 849	850 & Greater	Other	Total
2002-A	10/17/02	\$11,361,056	\$3,549,564	\$204,697	\$50,939	\$-	\$-	\$-	\$271,389,060
2003-A	03/13/03	\$13,902,133	\$3,613,502	\$388,842	\$99,366	\$-	\$-	\$71,920,404	\$443,122,917
2003-B	06/27/03	\$21,660,368	\$5,386,658	\$588,780	\$123,083	\$13,708	\$-	\$67,392,640	\$623,674,218
2003-C	10/09/03	\$21,938,083	\$5,442,333	\$365,398	\$123,920	\$5,191	\$605	\$100,846,872	\$621,922,042
2004-A	03/25/04	\$14,250,357	\$3,963,149	\$452,655	\$84,581	\$-	\$-	\$153,405,670	\$553,297,696
2004-B	05/26/04	\$18,773,670	\$5,969,740	\$407,028	\$-	\$-	\$10,762	\$7,269,470	\$649,201,091
2005-A	04/28/05	\$23,040,905	\$8,388,250	\$410,393	\$-	\$-	\$24,803	\$22,758,409	\$727,326,393
2005-B	10/27/05	\$36,916,187	\$18,865,746	\$264,236	\$3,139	\$-	\$-	\$7,385,917	\$768,109,881

TRANSACTION TYPE: PRIVATE CREDIT

ORIGINAL POOL CHARACTERISTICS AS OF STATISTICAL CUTOFF DATE

SLM Student Loan Trust 2006-A

DISTRIBUTION OF FICO CREDIT SCORES AS OF A DATE NEAR THE LOAN APPLICATION - CO-BORROWER LOANS

Percent of Pool By Outstanding Principal Balance

Issue	Settlement Date	FICO Score													
		Less than 630	630 - 639	640 - 649	650 - 659	660 - 669	670 - 679	680 - 689	690 - 699	700 - 709	710 - 719	720 - 729	730 - 739	740 - 749	750 - 759
2002-A	10/17/02	- %	2.2%	2.7%	3.0%	3.8%	3.6%	4.0%	4.6%	6.6%	6.4%	6.5%	6.8%	6.7%	6.4%
2003-A	03/13/03	- %	1.8%	2.7%	3.1%	3.1%	3.5%	3.5%	3.9%	5.8%	5.6%	5.8%	5.4%	5.7%	5.9%
2003-B	06/27/03	- %	0.6%	2.7%	3.0%	3.1%	3.2%	3.7%	3.8%	6.2%	6.3%	5.9%	6.0%	5.9%	6.3%
2003-C	10/09/03	- %	0.7%	2.6%	2.7%	2.8%	3.1%	3.2%	3.5%	5.8%	5.5%	5.5%	5.7%	5.9%	5.9%
2004-A	03/25/04	0.1%	0.5%	2.0%	2.3%	2.5%	2.7%	2.8%	2.9%	5.0%	5.1%	4.9%	5.1%	5.0%	5.4%
2004-B	05/26/04	0.1%	0.2%	2.7%	2.7%	3.0%	3.4%	3.5%	3.9%	6.7%	6.7%	7.0%	6.7%	7.2%	8.4%
2005-A	04/28/05	- %	0.3%	2.1%	2.3%	2.5%	3.0%	3.1%	3.4%	7.0%	6.8%	6.9%	7.0%	7.6%	8.8%
2005-B	10/27/05	- %	0.3%	2.0%	2.3%	2.8%	3.0%	3.2%	3.5%	6.7%	6.7%	6.7%	6.9%	7.3%	8.1%

TRANSACTION TYPE: PRIVATE CREDIT

ORIGINAL POOL CHARACTERISTICS AS OF STATISTICAL CUTOFF DATE

SLM Student Loan Trust 2006-A

DISTRIBUTION OF FICO CREDIT SCORES AS OF A DATE NEAR THE LOAN APPLICATION - CO-BORROWER LOANS

Percent of Pool By Outstanding Principal Balance

Issue	Settlement Date	FICO Score											Total
		760 - 769	770 - 779	780 - 789	790 - 799	800 - 809	810 - 819	820 - 829	830 - 839	840 - 849	850 & Greater	Other	
2002-A	10/17/02	7.6%	7.9%	8.4%	7.3%	4.2%	1.3%	0.1%	- %	- %	- %	- %	100.0%
2003-A	03/13/03	6.0%	6.4%	6.0%	5.4%	3.1%	0.8%	0.1%	- %	- %	- %	16.2%	100.0%
2003-B	06/27/03	6.9%	7.2%	7.4%	6.5%	3.5%	0.9%	0.1%	- %	- %	- %	10.8%	100.0%
2003-C	10/09/03	6.5%	6.9%	7.0%	6.0%	3.5%	0.9%	0.1%	- %	- %	- %	16.2%	100.0%
2004-A	03/25/04	5.7%	5.8%	5.7%	5.3%	2.6%	0.7%	0.1%	- %	- %	- %	27.7%	100.0%
2004-B	05/26/04	8.4%	8.1%	8.2%	8.1%	2.9%	0.9%	0.1%	- %	- %	- %	1.1%	100.0%
2005-A	04/28/05	8.4%	8.3%	7.7%	7.2%	3.2%	1.2%	0.1%	- %	- %	- %	3.1%	100.0%
2005-B	10/27/05	8.1%	8.4%	8.4%	7.5%	4.8%	2.5%	- %	- %	- %	- %	1.0%	100.0%

TRANSACTION TYPE: PRIVATE CREDIT

ORIGINAL POOL CHARACTERISTICS AS OF STATISTICAL CUTOFF DATE

SLM Student Loan Trust 2006-A

DISTRIBUTION OF FICO CREDIT SCORES AS OF A DATE NEAR THE LOAN APPLICATION - LOANS WITHOUT CO-BORROWERS

Issue	Settlement Date	Aggregate Outstanding Principal Balance								
		FICO Score								
		Less than 630	630 - 639	640 - 649	650 - 659	660 - 669	670 - 679	680 - 689	690 - 699	700 - 709
2002-A	10/17/02	\$-	\$20,579,744	\$20,819,589	\$21,238,859	\$22,405,097	\$22,957,438	\$23,812,714	\$23,025,639	\$23,289,040
2003-A	03/13/03	\$98,885	\$19,958,095	\$26,590,188	\$25,904,792	\$25,477,579	\$27,695,540	\$26,988,815	\$24,570,582	\$20,982,590
2003-B	06/27/03	\$46,350	\$9,499,563	\$37,365,743	\$37,121,233	\$35,824,702	\$37,298,711	\$35,218,066	\$31,784,876	\$29,114,356
2003-C	10/09/03	\$4,440,530	\$12,651,761	\$38,846,592	\$36,402,376	\$37,527,185	\$38,269,002	\$38,254,680	\$35,180,482	\$33,936,623
2004-A	03/25/04	\$4,225,456	\$10,487,765	\$35,826,344	\$35,237,965	\$32,750,081	\$34,660,171	\$33,561,413	\$28,728,458	\$25,958,770
2004-B	05/26/04	\$2,189,047	\$6,213,836	\$48,851,249	\$54,370,824	\$44,817,096	\$48,918,830	\$48,863,843	\$40,713,324	\$40,200,700
2005-A	04/28/05	\$1,122,017	\$13,525,209	\$72,846,767	\$72,512,008	\$60,825,723	\$68,472,363	\$66,653,377	\$56,322,998	\$56,054,070
2005-B	10/27/05	\$1,372,145	\$7,112,339	\$64,517,303	\$65,270,838	\$62,110,426	\$67,941,109	\$65,631,151	\$57,244,360	\$55,986,159

TRANSACTION TYPE: PRIVATE CREDIT

ORIGINAL POOL CHARACTERISTICS AS OF STATISTICAL CUTOFF DATE

SLM Student Loan Trust 2006-A

DISTRIBUTION OF FICO CREDIT SCORES AS OF A DATE NEAR THE LOAN APPLICATION - LOANS WITHOUT CO-BORROWERS

		Aggregate Outstanding Principal Balance								
		FICO Score								
Issue	Settlement Date	710 - 719	720 - 729	730 - 739	740 - 749	750 - 759	760 - 769	770 - 779	780 - 789	790 - 799
2002-A	10/17/02	\$20,874,198	\$19,892,887	\$19,476,273	\$19,092,001	\$18,195,834	\$15,512,051	\$11,936,794	\$8,320,444	\$3,351,490
2003-A	03/13/03	\$19,140,096	\$17,428,788	\$15,423,657	\$13,770,554	\$12,343,774	\$9,471,138	\$6,228,948	\$3,756,998	\$2,006,873
2003-B	06/27/03	\$24,597,660	\$21,699,452	\$19,518,835	\$17,954,440	\$15,795,285	\$12,816,765	\$8,716,052	\$5,418,159	\$2,720,167
2003-C	10/09/03	\$29,949,198	\$29,298,623	\$25,695,552	\$24,920,988	\$22,620,724	\$21,057,730	\$15,176,397	\$11,503,478	\$5,009,213
2004-A	03/25/04	\$25,063,941	\$22,876,850	\$20,297,842	\$18,248,676	\$14,681,604	\$11,146,182	\$8,992,310	\$5,668,609	\$2,754,892
2004-B	05/26/04	\$36,888,440	\$34,099,409	\$31,250,115	\$30,205,868	\$26,733,958	\$18,153,729	\$13,018,590	\$8,760,111	\$4,739,175
2005-A	04/28/05	\$50,459,393	\$45,166,015	\$38,902,595	\$38,608,027	\$29,775,058	\$20,601,563	\$13,883,365	\$8,751,063	\$4,639,135
2005-B	10/27/05	\$50,173,798	\$44,911,555	\$40,366,007	\$37,121,450	\$28,655,011	\$19,226,287	\$12,789,109	\$9,196,173	\$5,588,599

TRANSACTION TYPE: PRIVATE CREDIT

ORIGINAL POOL CHARACTERISTICS AS OF STATISTICAL CUTOFF DATE

SLM Student Loan Trust 2006-A

DISTRIBUTION OF FICO CREDIT SCORES AS OF A DATE NEAR THE LOAN APPLICATION - LOANS WITHOUT CO-BORROWERS

		Aggregate Outstanding Principal Balance							
		FICO Score							Total
Issue	Settlement Date	800 - 809	810 - 819	820 - 829	830 - 839	840 - 849	850 & Greater	Other	Total
2002-A	10/17/02	\$1,143,997	\$143,765	\$34,371	\$6,773	\$-	\$-	\$102,836,328	\$418,945,326
2003-A	03/13/03	\$672,482	\$88,285	\$-	\$-	\$-	\$10,127	\$263,448,477	\$562,057,262
2003-B	06/27/03	\$935,313	\$111,591	\$16,321	\$9,042	\$-	\$-	\$240,023,419	\$623,606,100
2003-C	10/09/03	\$1,592,134	\$386,403	\$-	\$28,491	\$-	\$10,090	\$165,285,765	\$628,044,019
2004-A	03/25/04	\$769,679	\$259,958	\$5,585	\$-	\$-	\$34,177	\$326,623,870	\$698,860,596
2004-B	05/26/04	\$951,542	\$244,584	\$9,029	\$-	\$15,263	\$-	\$93,164,784	\$633,373,350
2005-A	04/28/05	\$1,327,392	\$312,662	\$35,877	\$-	\$-	\$15,065	\$56,925,548	\$777,737,289
2005-B	10/27/05	\$2,128,476	\$649,169	\$-	\$-	\$-	\$-	\$34,053,617	\$732,045,082

TRANSACTION TYPE: PRIVATE CREDIT

ORIGINAL POOL CHARACTERISTICS AS OF STATISTICAL CUTOFF DATE

SLM Student Loan Trust 2006-A

DISTRIBUTION OF FICO CREDIT SCORES AS OF A DATE NEAR THE LOAN APPLICATION - LOANS WITHOUT CO-BORROWERS

Percent of Pool By Outstanding Principal Balance

Issue	Settlement Date	FICO Score								
		Less than 630	630 - 639	640 - 649	650 - 659	660 - 669	670 - 679	680 - 689	690 - 699	700 - 709
2002-A	10/17/02	- %	4.9%	5.0%	5.1%	5.3%	5.5%	5.7%	5.5%	5.6%
2003-A	03/13/03	- %	3.6%	4.7%	4.6%	4.5%	4.9%	4.8%	4.4%	3.7%
2003-B	06/27/03	- %	1.5%	6.0%	6.0%	5.7%	6.0%	5.6%	5.1%	4.7%
2003-C	10/09/03	0.7%	2.0%	6.2%	5.8%	6.0%	6.1%	6.1%	5.6%	5.4%
2004-A	03/25/04	0.6%	1.5%	5.1%	5.0%	4.7%	5.0%	4.8%	4.1%	3.7%
2004-B	05/26/04	0.3%	1.0%	7.7%	8.6%	7.1%	7.7%	7.7%	6.4%	6.3%
2005-A	04/28/05	0.1%	1.7%	9.4%	9.3%	7.8%	8.8%	8.6%	7.2%	7.2%
2005-B	10/27/05	0.2%	1.0%	8.8%	8.9%	8.5%	9.3%	9.0%	7.8%	7.6%

TRANSACTION TYPE: PRIVATE CREDIT

ORIGINAL POOL CHARACTERISTICS AS OF STATISTICAL CUTOFF DATE

SLM Student Loan Trust 2006-A

DISTRIBUTION OF FICO CREDIT SCORES AS OF A DATE NEAR THE LOAN APPLICATION - LOANS WITHOUT CO-BORROWERS

Percent of Pool By Outstanding Principal Balance

Issue	Settlement Date	FICO Score								
		710 - 719	720 - 729	730 - 739	740 - 749	750 - 759	760 - 769	770 - 779	780 - 789	790 - 799
2002-A	10/17/02	5.0%	4.7%	4.6%	4.6%	4.3%	3.7%	2.8%	2.0%	0.8%
2003-A	03/13/03	3.4%	3.1%	2.7%	2.5%	2.2%	1.7%	1.1%	0.7%	0.4%
2003-B	06/27/03	3.9%	3.5%	3.1%	2.9%	2.5%	2.1%	1.4%	0.9%	0.4%
2003-C	10/09/03	4.8%	4.7%	4.1%	4.0%	3.6%	3.4%	2.4%	1.8%	0.8%
2004-A	03/25/04	3.6%	3.3%	2.9%	2.6%	2.1%	1.6%	1.3%	0.8%	0.4%
2004-B	05/26/04	5.8%	5.4%	4.9%	4.8%	4.2%	2.9%	2.1%	1.4%	0.7%
2005-A	04/28/05	6.5%	5.8%	5.0%	5.0%	3.8%	2.6%	1.8%	1.1%	0.6%
2005-B	10/27/05	6.9%	6.1%	5.5%	5.1%	3.9%	2.6%	1.7%	1.3%	0.8%

TRANSACTION TYPE: PRIVATE CREDIT

ORIGINAL POOL CHARACTERISTICS AS OF STATISTICAL CUTOFF DATE

SLM Student Loan Trust 2006-A

DISTRIBUTION OF FICO CREDIT SCORES AS OF A DATE NEAR THE LOAN APPLICATION - LOANS WITHOUT CO-BORROWERS

Percent of Pool By Outstanding Principal Balance

Issue	Settlement Date	FICO Score							Total
		800 - 809	810 - 819	820 - 829	830 - 839	840 - 849	850 & Greater	Other	
2002-A	10/17/02	0.3%	- %	- %	- %	- %	- %	24.5%	100.0%
2003-A	03/13/03	0.1%	- %	- %	- %	- %	- %	46.9%	100.0%
2003-B	06/27/03	0.1%	- %	- %	- %	- %	- %	38.5%	100.0%
2003-C	10/09/03	0.3%	0.1%	- %	- %	- %	- %	26.3%	100.0%
2004-A	03/25/04	0.1%	- %	- %	- %	- %	- %	46.7%	100.0%
2004-B	05/26/04	0.2%	- %	- %	- %	- %	- %	14.7%	100.0%
2005-A	04/28/05	0.2%	- %	- %	- %	- %	- %	7.3%	100.0%
2005-B	10/27/05	0.3%	0.1%	- %	- %	- %	- %	4.7%	100.0%

TRANSACTION TYPE: PRIVATE CREDIT

ORIGINAL POOL CHARACTERISTICS AS OF STATISTICAL CUTOFF DATE

SLM Student Loan Trust 2006-A

WEIGHTED AVERAGE FICO CREDIT SCORES

ALL BORROWERS AND CO-BORROWERS

Issue	Settlement Date	Wtd Avg FICO (Application)	Wtd Avg FICO (Recent)
2002-A	10/17/02	718	703
2003-A	03/13/03	715	710
2003-B	06/27/03	719	712
2003-C	10/09/03	720	712
2004-A	03/25/04	716	696
2004-B	05/26/04	720	703
2005-A	04/28/05	717	701
2005-B	10/27/05	721	710

TRANSACTION TYPE: PRIVATE CREDIT

ORIGINAL POOL CHARACTERISTICS AS OF STATISTICAL CUTOFF DATE

SLM Student Loan Trust 2006-A

WEIGHTED AVERAGE FICO CREDIT SCORES

ALL BORROWERS AND CO-BORROWERS

Issue	Settlement Date	Pct w/ FICO < 630 (Recent)	Pct w/ FICO not available (Recent)
2002-A	10/17/02	13.0%	1.8%
2003-A	03/13/03	10.1%	2.9%
2003-B	06/27/03	6.9%	2.9%
2003-C	10/09/03	9.7%	3.0%
2004-A	03/25/04	10.1%	2.0%
2004-B	05/26/04	8.8%	2.6%
2005-A	04/28/05	9.8%	6.0%
2005-B	10/27/05	8.7%	9.5%

TRANSACTION TYPE: PRIVATE CREDIT

ORIGINAL POOL CHARACTERISTICS AS OF STATISTICAL CUTOFF DATE

SLM Student Loan Trust 2006-A

WEIGHTED AVERAGE FICO CREDIT SCORES

Issue	Settlement Date	CO-BORROWER LOANS	
		Wtd Avg FICO (Application)	Wtd Avg FICO (Recent)
2002-A	10/17/02	735	726
2003-A	03/13/03	731	726
2003-B	06/27/03	736	729
2003-C	10/09/03	736	729
2004-A	03/25/04	736	720
2004-B	05/26/04	738	726
2005-A	04/28/05	740	729
2005-B	10/27/05	742	739

TRANSACTION TYPE: PRIVATE CREDIT

ORIGINAL POOL CHARACTERISTICS AS OF STATISTICAL CUTOFF DATE

SLM Student Loan Trust 2006-A

WEIGHTED AVERAGE FICO CREDIT SCORES

Issue	Settlement Date	CO-BORROWER LOANS	
		Pct w/ FICO < 630 (Recent)	Pct w/ FICO not available (Recent)
2002-A	10/17/02	7.0%	2.4%
2003-A	03/13/03	6.7%	4.3%
2003-B	06/27/03	4.6%	3.8%
2003-C	10/09/03	5.6%	3.7%
2004-A	03/25/04	5.8%	3.6%
2004-B	05/26/04	4.2%	4.1%
2005-A	04/28/05	4.0%	7.0%
2005-B	10/27/05	3.6%	11.0%

TRANSACTION TYPE: PRIVATE CREDIT

ORIGINAL POOL CHARACTERISTICS AS OF STATISTICAL CUTOFF DATE

WEIGHTED AVERAGE FICO CREDIT SCORES

LOANS WITHOUT CO-BORROWER

Issue	Settlement Date	Wtd Avg FICO (Application)	Wtd Avg FICO (Recent)
2002-A	10/17/02	703	689
2003-A	03/13/03	694	698
2003-B	06/27/03	695	695
2003-C	10/09/03	701	695
2004-A	03/25/04	695	678
2004-B	05/26/04	698	681
2005-A	04/28/05	696	675
2005-B	10/27/05	697	681

TRANSACTION TYPE: PRIVATE CREDIT

ORIGINAL POOL CHARACTERISTICS AS OF STATISTICAL CUTOFF DATE

SLM Student Loan Trust 2006-A

WEIGHTED AVERAGE FICO CREDIT SCORES

Issue	Settlement Date	LOANS WITHOUT CO-BORROWER	
		Pct w/ FICO < 630 (Recent)	Pct w/ FICO not available (Recent)
2002-A	10/17/02	16.7%	1.4%
2003-A	03/13/03	12.8%	1.8%
2003-B	06/27/03	9.2%	1.9%
2003-C	10/09/03	13.7%	2.4%
2004-A	03/25/04	13.5%	0.8%
2004-B	05/26/04	13.4%	1.0%
2005-A	04/28/05	15.2%	5.0%
2005-B	10/27/05	14.0%	7.9%

TRANSACTION TYPE: PRIVATE CREDIT

STATIC POOL DATA

SLM Student Loan Trust 2006-A

LOAN STATUS

Number of Loans

Issue	Collection Period End Date	Number of Loans					Total
		School	Grace	Deferment	Repayment	Forbearance	
2002-A	11/30/02	13,804	10,570	3,261	37,375	5,577	70,587
	02/28/03	12,558	3,853	3,914	41,445	8,124	69,894
	05/31/03	8,801	6,603	4,025	41,738	8,092	69,259
	08/31/03	6,486	7,530	4,045	43,255	7,404	68,720
	11/30/03	6,094	5,303	5,247	44,217	7,188	68,049
	02/29/04	5,457	2,257	5,411	47,365	6,988	67,478
	05/31/04	3,537	3,570	5,057	47,151	7,319	66,634
	08/31/04	2,461	4,007	4,953	47,845	6,561	65,827
	11/30/04	2,266	3,227	5,627	49,156	4,519	64,795
	02/28/05	1,927	1,524	5,796	51,052	3,489	63,788
	05/31/05	1,299	1,720	5,128	51,186	3,303	62,636
	08/31/05	991	1,642	4,855	50,482	3,368	61,338
	11/30/05	876	1,096	5,179	48,392	4,309	59,852
2003-A	05/31/03	42,877	15,686	2,212	54,752	5,440	120,967
	08/31/03	36,897	16,046	2,567	57,958	6,468	119,936
	11/30/03	34,863	6,562	4,104	65,960	6,991	118,480
	02/29/04	31,063	5,924	4,724	66,816	8,585	117,112
	05/31/04	23,706	11,965	4,598	66,776	8,441	115,486
	08/31/04	18,730	12,580	4,965	68,160	9,280	113,715
	11/30/04	17,975	4,258	6,534	77,367	5,967	112,101
	02/28/05	15,381	4,109	7,395	77,550	5,844	110,279
	05/31/05	10,660	8,204	6,664	77,478	5,076	108,082

TRANSACTION TYPE: PRIVATE CREDIT

STATIC POOL DATA

SLM Student Loan Trust 2006-A

LOAN STATUS

Number of Loans

Issue	Collection Period End Date	Number of Loans					Total
		School	Grace	Deferment	Repayment	Forbearance	
2003-A	08/31/05	8,195	7,832	6,840	76,810	6,056	105,733
	11/30/05	7,684	2,800	7,731	77,269	7,569	103,053
2003-B	08/31/03	69,751	17,326	1,331	49,470	4,535	142,413
	11/30/03	65,534	8,964	3,173	57,515	5,881	141,067
	02/29/04	59,743	8,919	4,177	59,894	7,253	139,986
	05/31/04	48,641	17,787	4,327	60,508	7,458	138,721
	08/31/04	41,692	18,126	4,798	64,065	8,576	137,257
	11/30/04	40,119	6,266	6,947	76,290	6,062	135,684
	02/28/05	35,384	6,959	8,120	77,424	6,229	134,116
	05/31/05	26,608	14,527	7,343	78,483	5,251	132,212
	08/31/05	22,025	14,112	7,838	79,311	6,724	130,010
	11/30/05	21,392	4,721	9,329	83,695	8,381	127,518
2003-C	11/30/03	63,723	14,379	3,188	46,967	5,748	134,005
	02/29/04	57,050	11,345	4,011	51,495	9,203	133,104
	05/31/04	44,973	20,311	4,133	53,205	9,373	131,995
	08/31/04	37,323	20,667	4,628	57,773	10,434	130,825
	11/30/04	35,188	9,880	6,973	70,141	7,336	129,518
	02/28/05	30,827	7,336	7,993	74,764	7,319	128,239
	05/31/05	22,850	13,652	7,358	75,771	6,959	126,590
	08/31/05	18,485	13,477	7,698	77,156	7,975	124,791
11/30/05	17,519	6,468	9,416	79,286	10,022	122,711	
2004-A	05/31/04	55,983	28,640	6,603	48,344	7,727	147,297

TRANSACTION TYPE: PRIVATE CREDIT

STATIC POOL DATA

SLM Student Loan Trust 2006-A

LOAN STATUS

Number of Loans

Issue	Collection Period End Date	Number of Loans					Total
		School	Grace	Deferment	Repayment	Forbearance	
2004-A	08/31/04	47,336	25,718	6,506	56,369	10,254	146,183
	11/30/04	43,801	14,603	9,074	69,954	7,424	144,856
	02/28/05	37,975	13,434	10,430	74,347	7,389	143,575
	05/31/05	29,296	18,498	9,482	77,836	6,748	141,860
	08/31/05	24,514	16,790	9,520	81,013	8,166	140,003
	11/30/05	23,006	9,274	11,275	83,981	10,309	137,845
2004-B	08/31/04	80,219	24,316	1,340	12,648	2,170	120,693
	11/30/04	76,686	11,566	2,629	26,828	2,212	119,921
	02/28/05	70,300	11,625	3,972	29,989	3,405	119,291
	05/31/05	56,868	22,067	3,984	32,206	3,339	118,464
	08/31/05	49,741	22,141	4,349	36,627	4,591	117,449
	11/30/05	48,288	9,126	6,183	46,515	6,197	116,309
2005-A	05/31/05	93,920	34,992	2,341	27,542	2,835	161,630
	08/31/05	82,612	32,325	2,907	37,677	4,880	160,401
	11/30/05	77,986	15,928	5,309	51,993	7,681	158,897
2005-B	11/30/05	101,619	15,902	2,956	33,992	3,950	158,419

TRANSACTION TYPE: PRIVATE CREDIT

STATIC POOL DATA

SLM Student Loan Trust 2006-A

LOAN STATUS

Aggregate Outstanding Principal Balance

Issue	Collection Period End Date	Aggregate Outstanding Principal Balance					Total
		School	Grace	Deferment	Repayment	Forbearance	
2002-A	11/30/02	\$137,602,650	\$103,407,081	\$29,863,414	\$346,155,726	\$52,234,012	\$669,262,882
	02/28/03	\$126,141,077	\$37,670,144	\$35,834,301	\$389,760,615	\$78,050,390	\$667,456,526
	05/31/03	\$84,416,926	\$68,329,258	\$36,540,527	\$390,496,484	\$79,981,806	\$659,765,001
	08/31/03	\$59,848,283	\$80,718,854	\$34,898,136	\$403,404,238	\$74,728,021	\$653,597,531
	11/30/03	\$55,609,559	\$55,537,711	\$45,120,386	\$419,540,152	\$72,965,831	\$648,773,640
	02/29/04	\$49,921,619	\$19,932,797	\$47,302,520	\$456,727,187	\$71,923,068	\$645,807,191
	05/31/04	\$31,066,034	\$33,997,531	\$45,006,168	\$447,254,248	\$79,046,353	\$636,370,334
	08/31/04	\$20,351,789	\$39,741,989	\$42,336,011	\$456,356,368	\$68,680,646	\$627,466,803
	11/30/04	\$18,902,494	\$32,810,756	\$49,189,573	\$465,177,082	\$50,785,751	\$616,865,656
	02/28/05	\$15,996,296	\$13,560,839	\$51,042,830	\$487,078,170	\$39,829,571	\$607,507,706
	05/31/05	\$10,433,594	\$15,762,886	\$45,470,279	\$481,750,032	\$40,400,061	\$593,816,853
	08/31/05	\$8,092,456	\$15,074,412	\$42,364,985	\$472,321,628	\$40,763,721	\$578,617,202
11/30/05	\$7,143,306	\$10,451,780	\$45,026,707	\$453,709,384	\$49,151,844	\$565,483,020	
2003-A	05/31/03	\$348,091,897	\$126,108,244	\$17,061,597	\$409,546,612	\$50,052,533	\$950,860,883
	08/31/03	\$294,280,490	\$137,845,010	\$20,211,495	\$430,416,191	\$59,178,126	\$941,931,312
	11/30/03	\$278,151,076	\$56,787,704	\$32,490,784	\$507,785,054	\$64,748,445	\$939,963,063
	02/29/04	\$248,705,843	\$48,611,288	\$38,249,602	\$511,987,517	\$82,120,197	\$929,674,448
	05/31/04	\$188,203,024	\$98,175,537	\$37,441,040	\$511,301,785	\$80,341,822	\$915,463,208
	08/31/04	\$147,388,178	\$105,891,352	\$41,151,048	\$520,250,739	\$89,407,181	\$904,088,498
	11/30/04	\$141,331,781	\$38,816,928	\$55,158,164	\$604,498,141	\$59,449,311	\$899,254,325
	02/28/05	\$121,878,806	\$33,678,972	\$62,730,117	\$602,123,415	\$64,190,239	\$884,601,548
	05/31/05	\$83,367,075	\$67,643,362	\$56,931,250	\$602,428,841	\$55,836,913	\$866,207,440

TRANSACTION TYPE: PRIVATE CREDIT

STATIC POOL DATA

SLM Student Loan Trust 2006-A

LOAN STATUS

Aggregate Outstanding Principal Balance

Issue	Collection Period End Date	Aggregate Outstanding Principal Balance					Total
		School	Grace	Deferment	Repayment	Forbearance	
2003-A	08/31/05	\$61,944,381	\$68,170,612	\$59,099,330	\$591,367,299	\$66,894,524	\$847,476,146
	11/30/05	\$58,687,785	\$26,795,488	\$67,412,805	\$602,343,767	\$80,704,889	\$835,944,733
2003-B	08/31/03	\$612,428,291	\$154,388,008	\$9,632,663	\$387,585,534	\$36,850,438	\$1,200,884,934
	11/30/03	\$572,863,845	\$85,248,657	\$23,425,409	\$465,563,075	\$48,838,443	\$1,195,939,429
	02/29/04	\$525,444,563	\$78,690,042	\$31,832,873	\$484,659,763	\$65,869,228	\$1,186,496,470
	05/31/04	\$424,969,271	\$156,042,133	\$33,223,448	\$488,658,930	\$70,533,723	\$1,173,427,505
	08/31/04	\$363,018,163	\$164,124,974	\$37,410,297	\$517,754,939	\$81,494,824	\$1,163,803,197
	11/30/04	\$348,160,916	\$58,296,842	\$56,486,763	\$638,236,764	\$60,513,690	\$1,161,694,974
	02/28/05	\$308,861,932	\$60,721,584	\$67,271,686	\$642,900,919	\$68,280,025	\$1,148,036,145
	05/31/05	\$232,150,523	\$126,956,085	\$61,561,251	\$650,930,147	\$58,600,348	\$1,130,198,354
	08/31/05	\$190,088,255	\$127,682,644	\$67,093,491	\$651,442,016	\$75,865,452	\$1,112,171,858
	11/30/05	\$185,810,937	\$45,355,112	\$81,349,259	\$703,127,630	\$90,663,312	\$1,106,306,250
2003-C	11/30/03	\$561,558,697	\$147,946,161	\$27,034,510	\$414,533,074	\$54,090,904	\$1,205,163,347
	02/29/04	\$501,650,096	\$108,856,448	\$33,825,307	\$465,108,206	\$91,715,162	\$1,201,155,218
	05/31/04	\$382,966,005	\$193,610,880	\$34,677,518	\$483,267,254	\$96,825,351	\$1,191,347,009
	08/31/04	\$309,124,211	\$204,882,078	\$39,399,573	\$524,208,914	\$108,417,349	\$1,186,032,124
	11/30/04	\$289,883,953	\$102,678,499	\$60,500,621	\$650,587,673	\$81,011,241	\$1,184,661,987
	02/28/05	\$254,699,254	\$64,147,906	\$69,676,127	\$704,134,297	\$85,130,000	\$1,177,787,583
	05/31/05	\$184,241,868	\$119,535,631	\$64,740,554	\$710,003,872	\$83,092,856	\$1,161,614,780
	08/31/05	\$146,084,691	\$121,816,933	\$69,616,597	\$715,834,355	\$93,986,720	\$1,147,339,296
11/30/05	\$139,045,821	\$64,340,591	\$84,628,671	\$736,537,224	\$114,113,973	\$1,138,666,280	
2004-A	05/31/04	\$416,592,528	\$221,303,295	\$64,818,391	\$424,996,482	\$75,811,106	\$1,203,521,803

Aggregate Outstanding Principal Balance

Issue	Collection Period End Date	Aggregate Outstanding Principal Balance					Total
		School	Grace	Deferment	Repayment	Forbearance	
2004-A	08/31/04	\$345,773,775	\$209,467,156	\$60,345,539	\$483,010,208	\$99,583,158	\$1,198,179,836
	11/30/04	\$314,198,286	\$127,723,581	\$80,790,214	\$598,700,273	\$73,963,359	\$1,195,375,714
	02/28/05	\$272,682,144	\$108,017,757	\$90,921,114	\$636,696,186	\$79,074,367	\$1,187,391,567
	05/31/05	\$208,873,784	\$140,432,571	\$83,733,957	\$666,884,170	\$73,789,154	\$1,173,713,636
	08/31/05	\$173,427,038	\$129,327,321	\$81,461,900	\$688,035,616	\$90,249,244	\$1,162,501,119
	11/30/05	\$163,383,588	\$75,458,793	\$96,218,817	\$711,184,487	\$108,662,531	\$1,154,908,216
2004-B	08/31/04	\$845,034,179	\$265,015,191	\$12,973,903	\$102,724,368	\$18,534,418	\$1,244,282,059
	11/30/04	\$805,925,399	\$126,711,214	\$21,796,440	\$271,086,548	\$20,367,016	\$1,245,886,616
	02/28/05	\$742,657,381	\$114,552,117	\$34,919,334	\$308,801,531	\$40,541,217	\$1,241,471,580
	05/31/05	\$587,271,412	\$237,447,391	\$35,999,475	\$331,353,921	\$41,528,994	\$1,233,601,193
	08/31/05	\$508,824,124	\$247,065,811	\$40,668,162	\$371,396,540	\$58,755,130	\$1,226,709,767
	11/30/05	\$493,546,454	\$101,291,407	\$59,103,656	\$498,876,418	\$79,899,764	\$1,232,717,699
2005-A	05/31/05	\$860,117,620	\$304,263,573	\$19,398,663	\$233,306,178	\$29,714,085	\$1,446,800,119
	08/31/05	\$749,329,139	\$307,626,636	\$23,231,719	\$308,233,356	\$51,835,665	\$1,440,256,514
	11/30/05	\$702,670,897	\$161,699,534	\$42,240,141	\$457,486,190	\$81,119,695	\$1,445,216,457
2005-B	11/30/05	\$923,452,009	\$162,076,853	\$23,631,957	\$292,280,052	\$39,693,780	\$1,441,134,651

Percent of Pool By Outstanding Principal Balance

Issue	Collection Period End Date	Percent of Pool By Outstanding Principal Balance					Total
		School	Grace	Deferment	Repayment	Forbearance	
2002-A	11/30/02	20.56%	15.45%	4.46%	51.72%	7.80%	100.00%
	02/28/03	18.90%	5.64%	5.37%	58.39%	11.69%	100.00%
	05/31/03	12.79%	10.36%	5.54%	59.19%	12.12%	100.00%
	08/31/03	9.16%	12.35%	5.34%	61.72%	11.43%	100.00%
	11/30/03	8.57%	8.56%	6.95%	64.67%	11.25%	100.00%
	02/29/04	7.73%	3.09%	7.32%	70.72%	11.14%	100.00%
	05/31/04	4.88%	5.34%	7.07%	70.28%	12.42%	100.00%
	08/31/04	3.24%	6.33%	6.75%	72.73%	10.95%	100.00%
	11/30/04	3.06%	5.32%	7.97%	75.41%	8.23%	100.00%
	02/28/05	2.63%	2.23%	8.40%	80.18%	6.56%	100.00%
	05/31/05	1.76%	2.65%	7.66%	81.13%	6.80%	100.00%
	08/31/05	1.40%	2.61%	7.32%	81.63%	7.05%	100.00%
11/30/05	1.26%	1.85%	7.96%	80.23%	8.69%	100.00%	
2003-A	05/31/03	36.61%	13.26%	1.79%	43.07%	5.26%	100.00%
	08/31/03	31.24%	14.63%	2.15%	45.70%	6.28%	100.00%
	11/30/03	29.59%	6.04%	3.46%	54.02%	6.89%	100.00%
	02/29/04	26.75%	5.23%	4.11%	55.07%	8.83%	100.00%
	05/31/04	20.56%	10.72%	4.09%	55.85%	8.78%	100.00%
	08/31/04	16.30%	11.71%	4.55%	57.54%	9.89%	100.00%
	11/30/04	15.72%	4.32%	6.13%	67.22%	6.61%	100.00%
	02/28/05	13.78%	3.81%	7.09%	68.07%	7.26%	100.00%
	05/31/05	9.62%	7.81%	6.57%	69.55%	6.45%	100.00%

Percent of Pool By Outstanding Principal Balance

Issue	Collection Period End Date	Percent of Pool By Outstanding Principal Balance					Total
		School	Grace	Deferment	Repayment	Forbearance	
2003-A	08/31/05	7.31%	8.04%	6.97%	69.78%	7.89%	100.00%
	11/30/05	7.02%	3.21%	8.06%	72.06%	9.65%	100.00%
2003-B	08/31/03	51.00%	12.86%	0.80%	32.27%	3.07%	100.00%
	11/30/03	47.90%	7.13%	1.96%	38.93%	4.08%	100.00%
	02/29/04	44.29%	6.63%	2.68%	40.85%	5.55%	100.00%
	05/31/04	36.22%	13.30%	2.83%	41.64%	6.01%	100.00%
	08/31/04	31.19%	14.10%	3.21%	44.49%	7.00%	100.00%
	11/30/04	29.97%	5.02%	4.86%	54.94%	5.21%	100.00%
	02/28/05	26.90%	5.29%	5.86%	56.00%	5.95%	100.00%
	05/31/05	20.54%	11.23%	5.45%	57.59%	5.18%	100.00%
	08/31/05	17.09%	11.48%	6.03%	58.57%	6.82%	100.00%
	11/30/05	16.80%	4.10%	7.35%	63.56%	8.20%	100.00%
2003-C	11/30/03	46.60%	12.28%	2.24%	34.40%	4.49%	100.00%
	02/29/04	41.76%	9.06%	2.82%	38.72%	7.64%	100.00%
	05/31/04	32.15%	16.25%	2.91%	40.56%	8.13%	100.00%
	08/31/04	26.06%	17.27%	3.32%	44.20%	9.14%	100.00%
	11/30/04	24.47%	8.67%	5.11%	54.92%	6.84%	100.00%
	02/28/05	21.63%	5.45%	5.92%	59.78%	7.23%	100.00%
	05/31/05	15.86%	10.29%	5.57%	61.12%	7.15%	100.00%
	08/31/05	12.73%	10.62%	6.07%	62.39%	8.19%	100.00%
	11/30/05	12.21%	5.65%	7.43%	64.68%	10.02%	100.00%
2004-A	05/31/04	34.61%	18.39%	5.39%	35.31%	6.30%	100.00%

Percent of Pool By Outstanding Principal Balance

Issue	Collection Period End Date	Percent of Pool By Outstanding Principal Balance					Total
		School	Grace	Deferment	Repayment	Forbearance	
2004-A	08/31/04	28.86%	17.48%	5.04%	40.31%	8.31%	100.00%
	11/30/04	26.28%	10.68%	6.76%	50.08%	6.19%	100.00%
	02/28/05	22.96%	9.10%	7.66%	53.62%	6.66%	100.00%
	05/31/05	17.80%	11.96%	7.13%	56.82%	6.29%	100.00%
	08/31/05	14.92%	11.12%	7.01%	59.19%	7.76%	100.00%
	11/30/05	14.15%	6.53%	8.33%	61.58%	9.41%	100.00%
2004-B	08/31/04	67.91%	21.30%	1.04%	8.26%	1.49%	100.00%
	11/30/04	64.69%	10.17%	1.75%	21.76%	1.63%	100.00%
	02/28/05	59.82%	9.23%	2.81%	24.87%	3.27%	100.00%
	05/31/05	47.61%	19.25%	2.92%	26.86%	3.37%	100.00%
	08/31/05	41.48%	20.14%	3.32%	30.28%	4.79%	100.00%
	11/30/05	40.04%	8.22%	4.79%	40.47%	6.48%	100.00%
2005-A	05/31/05	59.45%	21.03%	1.34%	16.13%	2.05%	100.00%
	08/31/05	52.03%	21.36%	1.61%	21.40%	3.60%	100.00%
	11/30/05	48.62%	11.19%	2.92%	31.66%	5.61%	100.00%
2005-B	11/30/05	64.08%	11.25%	1.64%	20.28%	2.75%	100.00%

TRANSACTION TYPE: PRIVATE CREDIT

STATIC POOL DATA

DELINQUENCY STATUS

Issue	Collection Period End Date	Number of Loans									Total Delinquent > 30 Days
		Number of Days Delinquent Ranges									
		0 to 30 Days	31 to 60 Days	61 to 90 Days	91 to 120 Days	121 to 150 Days	151 to 180 Days	181 to 210 Days	> 210 Days		
2002-A	11/30/02	35,780	733	362	233	251	16	-	-	1,595	
	02/28/03	39,114	1,302	765	149	94	21	-	-	2,331	
	05/31/03	39,947	892	511	242	138	8	-	-	1,791	
	08/31/03	40,886	1,267	713	222	130	37	-	-	2,369	
	11/30/03	41,989	1,096	599	273	208	49	3	-	2,228	
	02/29/04	44,725	1,342	681	307	221	85	4	-	2,640	
	05/31/04	44,682	1,129	569	420	240	111	-	-	2,469	
	08/31/04	45,085	1,163	782	364	325	126	-	-	2,760	
	11/30/04	46,102	1,288	745	428	374	219	-	-	3,054	
	02/28/05	48,410	1,286	618	315	289	134	-	-	2,642	
	05/31/05	48,955	1,105	395	376	242	113	-	-	2,231	
	08/31/05	48,048	1,139	520	396	256	123	-	-	2,434	
11/30/05	46,537	1,125	337	182	134	77	-	-	1,855		
2003-A	05/31/03	53,739	654	178	114	58	9	-	-	1,013	
	08/31/03	56,051	1,187	539	114	60	7	-	-	1,907	
	11/30/03	64,445	829	284	183	183	35	1	-	1,515	
	02/29/04	63,912	1,536	928	298	113	28	1	-	2,904	
	05/31/04	64,505	1,016	510	394	247	104	-	-	2,271	
	08/31/04	65,157	1,458	834	380	233	98	-	-	3,003	
	11/30/04	74,400	1,167	614	459	523	204	-	-	2,967	

TRANSACTION TYPE: PRIVATE CREDIT

STATIC POOL DATA

DELINQUENCY STATUS

Issue	Collection Period End Date	Number of Loans	
		Total Repayment	Total Loans
2002-A	11/30/02	37,375	70,587
	02/28/03	41,445	69,894
	05/31/03	41,738	69,259
	08/31/03	43,255	68,720
	11/30/03	44,217	68,049
	02/29/04	47,365	67,478
	05/31/04	47,151	66,634
	08/31/04	47,845	65,827
	11/30/04	49,156	64,795
	02/28/05	51,052	63,788
	05/31/05	51,186	62,636
	08/31/05	50,482	61,338
	11/30/05	48,392	59,852
2003-A	05/31/03	54,752	120,967
	08/31/03	57,958	119,936
	11/30/03	65,960	118,480
	02/29/04	66,816	117,112
	05/31/04	66,776	115,486
	08/31/04	68,160	113,715
	11/30/04	77,367	112,101

STATIC POOL DATA

DELINQUENCY STATUS

Issue	Collection Period End Date	Number of Loans								Total Delinquent > 30 Days
		Number of Days Delinquent Ranges								
		0 to 30 Days	31 to 60 Days	61 to 90 Days	91 to 120 Days	121 to 150 Days	151 to 180 Days	181 to 210 Days	> 210 Days	
2003-A	02/28/05	73,828	1,850	1,048	442	318	64	-	-	3,722
	05/31/05	74,593	1,230	579	543	399	134	-	-	2,885
	08/31/05	73,720	1,285	838	497	331	139	-	-	3,090
	11/30/05	75,263	1,035	502	221	135	113	-	-	2,006
2003-B	08/31/03	47,201	1,384	483	267	117	18	-	-	2,269
	11/30/03	55,708	1,097	339	110	214	44	3	-	1,807
	02/29/04	56,232	1,877	1,179	414	161	31	-	-	3,662
	05/31/04	57,770	1,327	526	412	305	168	-	-	2,738
	08/31/04	60,295	1,838	1,012	518	280	122	-	-	3,770
	11/30/04	72,697	1,446	753	525	608	261	-	-	3,593
	02/28/05	72,935	2,193	1,276	560	380	80	-	-	4,489
	05/31/05	74,960	1,671	661	667	389	135	-	-	3,523
	08/31/05	75,058	1,930	1,062	656	457	148	-	-	4,253
	11/30/05	80,582	1,787	671	290	272	93	-	-	3,113
2003-C	11/30/03	44,869	992	453	317	287	49	-	-	2,098
	02/29/04	48,174	1,632	1,163	303	154	65	4	-	3,321
	05/31/04	50,404	1,370	610	442	225	154	-	-	2,801
	08/31/04	53,750	2,011	992	538	300	180	2	-	4,023
	11/30/04	66,209	1,735	762	488	652	295	-	-	3,932
	02/28/05	70,031	2,450	1,217	576	391	99	-	-	4,733

TRANSACTION TYPE: PRIVATE CREDIT

STATIC POOL DATA

SLM Student Loan Trust 2006-A

DELINQUENCY STATUS

Issue	Collection Period End Date	Number of Loans	
		Number of Days Delinquent Ranges	
		Total Repayment	Total Loans
2003-A	02/28/05	77,550	110,279
	05/31/05	77,478	108,082
	08/31/05	76,810	105,733
	11/30/05	77,269	103,053
2003-B	08/31/03	49,470	142,413
	11/30/03	57,515	141,067
	02/29/04	59,894	139,986
	05/31/04	60,508	138,721
	08/31/04	64,065	137,257
	11/30/04	76,290	135,684
	02/28/05	77,424	134,116
	05/31/05	78,483	132,212
	08/31/05	79,311	130,010
	11/30/05	83,695	127,518
2003-C	11/30/03	46,967	134,005
	02/29/04	51,495	133,104
	05/31/04	53,205	131,995
	08/31/04	57,773	130,825
	11/30/04	70,141	129,518
	02/28/05	74,764	128,239

STATIC POOL DATA

DELINQUENCY STATUS

Issue	Collection Period End Date	Number of Loans								Total Delinquent > 30 Days
		Number of Days Delinquent Ranges								
		0 to 30 Days	31 to 60 Days	61 to 90 Days	91 to 120 Days	121 to 150 Days	151 to 180 Days	181 to 210 Days	> 210 Days	
2003-C	05/31/05	72,004	1,812	666	693	428	168	-	-	3,767
	08/31/05	72,470	2,349	1,118	659	416	144	-	-	4,686
	11/30/05	75,853	2,026	732	288	276	111	-	-	3,433
2004-A	05/31/04	45,995	1,221	488	339	241	60	-	-	2,349
	08/31/04	53,081	1,771	814	348	260	95	-	-	3,288
	11/30/04	66,361	1,648	820	407	519	199	-	-	3,593
	02/28/05	69,582	2,554	1,236	566	332	77	-	-	4,765
	05/31/05	73,978	1,893	696	772	429	68	-	-	3,858
	08/31/05	75,875	2,636	1,245	695	455	107	-	-	5,138
	11/30/05	80,064	2,231	796	420	344	126	-	-	3,917
2004-B	08/31/04	11,332	744	346	141	63	22	-	-	1,316
	11/30/04	25,644	474	214	123	242	131	-	-	1,184
	02/28/05	27,795	1,050	791	224	116	13	-	-	2,194
	05/31/05	30,619	767	274	335	185	26	-	-	1,587
	08/31/05	34,015	1,363	639	409	177	24	-	-	2,612
	11/30/05	44,718	990	372	184	203	48	-	-	1,797
2005-A	05/31/05	26,507	656	275	104	-	-	-	-	1,035
	08/31/05	35,363	1,254	534	293	200	33	-	-	2,314
	11/30/05	50,132	988	521	152	182	18	-	-	1,861
2005-B	11/30/05	32,984	610	215	114	69	-	-	-	1,008

TRANSACTION TYPE: PRIVATE CREDIT

STATIC POOL DATA

SLM Student Loan Trust 2006-A

DELINQUENCY STATUS

Issue	Collection Period End Date	Number of Loans	
		Number of Days Delinquent Ranges	
		Total Repayment	Total Loans
2003-C	05/31/05	75,771	126,590
	08/31/05	77,156	124,791
	11/30/05	79,286	122,711
2004-A	05/31/04	48,344	147,297
	08/31/04	56,369	146,183
	11/30/04	69,954	144,856
	02/28/05	74,347	143,575
	05/31/05	77,836	141,860
	08/31/05	81,013	140,003
	11/30/05	83,981	137,845
2004-B	08/31/04	12,648	120,693
	11/30/04	26,828	119,921
	02/28/05	29,989	119,291
	05/31/05	32,206	118,464
	08/31/05	36,627	117,449
	11/30/05	46,515	116,309
2005-A	05/31/05	27,542	161,630
	08/31/05	37,677	160,401
	11/30/05	51,993	158,897
2005-B	11/30/05	33,992	158,419

STATIC POOL DATA

DELINQUENCY STATUS

Aggregate Outstanding Principal Balance

Number of Days Delinquent Ranges

Issue	Collection Period End Date	Number of Days Delinquent Ranges								Total Delinquent > 30 Days
		0 to 30 Days	31 to 60 Days	61 to 90 Days	91 to 120 Days	121 to 150 Days	151 to 180 Days	181 to 210 Days	> 210 Days	
2002-A	11/30/02	\$332,970,455	\$6,255,913	\$2,773,359	\$1,994,958	\$2,054,998	\$106,042	\$-	\$-	\$13,185,271
	02/28/03	\$369,517,323	\$11,287,474	\$6,832,286	\$1,188,191	\$762,397	\$172,944	\$-	\$-	\$20,243,292
	05/31/03	\$374,932,886	\$7,455,399	\$4,542,158	\$2,240,511	\$1,232,194	\$93,336	\$-	\$-	\$15,563,597
	08/31/03	\$382,336,903	\$11,417,705	\$6,534,041	\$1,836,016	\$986,793	\$292,779	\$-	\$-	\$21,067,334
	11/30/03	\$399,394,075	\$9,839,825	\$5,372,060	\$2,542,458	\$1,897,898	\$431,475	\$62,362	\$-	\$20,146,077
	02/29/04	\$432,110,703	\$12,971,446	\$6,101,113	\$2,614,114	\$1,957,239	\$901,313	\$71,258	\$-	\$24,616,484
	05/31/04	\$425,454,404	\$9,791,579	\$5,131,600	\$3,650,269	\$2,305,770	\$920,625	\$-	\$-	\$21,799,844
	08/31/04	\$431,188,187	\$11,085,846	\$7,011,904	\$3,098,643	\$2,854,886	\$1,116,902	\$-	\$-	\$25,168,181
	11/30/04	\$437,326,179	\$11,652,566	\$7,031,722	\$3,786,003	\$3,486,588	\$1,894,023	\$-	\$-	\$27,850,903
	02/28/05	\$463,224,293	\$11,797,914	\$5,732,890	\$2,642,229	\$2,399,602	\$1,281,242	\$-	\$-	\$23,853,877
	05/31/05	\$462,078,249	\$9,472,425	\$3,596,776	\$3,442,397	\$2,183,533	\$976,653	\$-	\$-	\$19,671,783
	08/31/05	\$450,108,591	\$10,665,927	\$4,578,762	\$3,661,508	\$2,166,641	\$1,140,199	\$-	\$-	\$22,213,037
11/30/05	\$436,564,470	\$10,533,787	\$3,176,160	\$1,539,371	\$1,345,940	\$549,656	\$-	\$-	\$17,144,913	
2003-A	05/31/03	\$402,100,748	\$4,980,983	\$1,230,368	\$751,062	\$399,288	\$84,163	\$-	\$-	\$7,445,864
	08/31/03	\$414,767,537	\$9,805,516	\$4,327,083	\$1,002,618	\$475,259	\$38,176	\$-	\$-	\$15,648,654
	11/30/03	\$495,366,796	\$6,625,930	\$2,331,760	\$1,600,678	\$1,476,981	\$360,399	\$22,510	\$-	\$12,418,258
	02/29/04	\$487,930,767	\$12,526,580	\$8,058,254	\$2,371,613	\$824,496	\$270,811	\$4,997	\$-	\$24,056,750
	05/31/04	\$492,053,998	\$8,685,842	\$3,939,801	\$3,534,047	\$2,162,981	\$925,117	\$-	\$-	\$19,247,788
	08/31/04	\$494,980,570	\$12,250,643	\$7,063,787	\$3,116,449	\$2,015,646	\$823,644	\$-	\$-	\$25,270,169
	11/30/04	\$578,535,334	\$10,074,518	\$5,748,551	\$4,167,407	\$4,236,402	\$1,735,927	\$-	\$-	\$25,962,806

TRANSACTION TYPE: PRIVATE CREDIT

STATIC POOL DATA

SLM Student Loan Trust 2006-A

DELINQUENCY STATUS

Issue	Collection Period End Date	Aggregate Outstanding Principal	
		Total Repayment	Total Principal
2002-A	11/30/02	\$346,155,726	\$669,262,882
	02/28/03	\$389,760,615	\$667,456,526
	05/31/03	\$390,496,484	\$659,765,001
	08/31/03	\$403,404,238	\$653,597,531
	11/30/03	\$419,540,152	\$648,773,640
	02/29/04	\$456,727,187	\$645,807,191
	05/31/04	\$447,254,248	\$636,370,334
	08/31/04	\$456,356,368	\$627,466,803
	11/30/04	\$465,177,082	\$616,865,656
	02/28/05	\$487,078,170	\$607,507,706
	05/31/05	\$481,750,032	\$593,816,853
	08/31/05	\$472,321,628	\$578,617,202
11/30/05	\$453,709,384	\$565,483,020	
2003-A	05/31/03	\$409,546,612	\$950,860,883
	08/31/03	\$430,416,191	\$941,931,312
	11/30/03	\$507,785,054	\$939,963,063
	02/29/04	\$511,987,517	\$929,674,448
	05/31/04	\$511,301,785	\$915,463,208
	08/31/04	\$520,250,739	\$904,088,498
	11/30/04	\$604,498,141	\$899,254,325

DELINQUENCY STATUS

Aggregate Outstanding Principal Balance

Number of Days Delinquent Ranges

Issue	Collection Period End Date	Number of Days Delinquent Ranges								Total Delinquent > 30 Days
		0 to 30 Days	31 to 60 Days	61 to 90 Days	91 to 120 Days	121 to 150 Days	151 to 180 Days	181 to 210 Days	> 210 Days	
2003-A	02/28/05	\$570,549,635	\$16,167,040	\$8,484,976	\$3,623,886	\$2,547,322	\$750,555	\$-	\$-	\$31,573,780
	05/31/05	\$578,111,464	\$10,049,247	\$4,652,209	\$4,770,063	\$3,685,893	\$1,159,964	\$-	\$-	\$24,317,377
	08/31/05	\$565,470,803	\$10,828,643	\$6,867,705	\$4,255,716	\$2,761,268	\$1,183,163	\$-	\$-	\$25,896,496
	11/30/05	\$585,673,447	\$8,367,552	\$4,285,610	\$1,886,644	\$1,137,163	\$993,350	\$-	\$-	\$16,670,320
2003-B	08/31/03	\$369,857,825	\$10,671,798	\$3,984,304	\$1,827,710	\$1,073,203	\$170,693	\$-	\$-	\$17,727,710
	11/30/03	\$451,127,944	\$8,437,763	\$2,888,540	\$893,954	\$1,713,193	\$474,592	\$27,088	\$-	\$14,435,130
	02/29/04	\$454,885,632	\$15,144,089	\$9,853,270	\$3,331,179	\$1,159,511	\$286,081	\$-	\$-	\$29,774,131
	05/31/04	\$466,451,868	\$10,442,642	\$4,402,428	\$3,430,237	\$2,474,691	\$1,457,065	\$-	\$-	\$22,207,063
	08/31/04	\$486,042,998	\$15,244,868	\$8,471,794	\$4,444,678	\$2,442,009	\$1,108,591	\$-	\$-	\$31,711,940
	11/30/04	\$608,170,080	\$12,067,191	\$6,050,623	\$4,471,302	\$5,327,539	\$2,150,028	\$-	\$-	\$30,066,684
	02/28/05	\$604,955,087	\$18,617,806	\$11,213,416	\$4,558,500	\$2,922,860	\$633,249	\$-	\$-	\$37,945,831
	05/31/05	\$620,962,139	\$14,388,768	\$5,169,251	\$5,860,342	\$3,427,319	\$1,122,328	\$-	\$-	\$29,968,009
	08/31/05	\$615,699,047	\$16,354,147	\$8,520,746	\$5,591,460	\$3,977,959	\$1,298,657	\$-	\$-	\$35,742,969
	11/30/05	\$676,475,531	\$15,607,635	\$5,620,088	\$2,610,439	\$2,153,089	\$660,849	\$-	\$-	\$26,652,099
2003-C	11/30/03	\$396,962,388	\$8,054,734	\$3,791,121	\$2,885,038	\$2,334,173	\$505,620	\$-	\$-	\$17,570,686
	02/29/04	\$435,534,144	\$14,371,790	\$10,492,524	\$2,735,300	\$1,374,170	\$561,437	\$38,841	\$-	\$29,574,062
	05/31/04	\$459,777,818	\$11,094,786	\$5,401,919	\$3,735,121	\$2,001,362	\$1,256,249	\$-	\$-	\$23,489,437
	08/31/04	\$489,127,131	\$16,965,232	\$9,555,835	\$4,548,896	\$2,313,025	\$1,688,809	\$9,986	\$-	\$35,081,784
	11/30/04	\$615,474,419	\$15,154,278	\$7,232,304	\$4,346,538	\$5,501,101	\$2,879,033	\$-	\$-	\$35,113,254
	02/28/05	\$660,338,466	\$23,424,212	\$10,974,508	\$5,143,904	\$3,298,234	\$954,972	\$-	\$-	\$43,795,831

TRANSACTION TYPE: PRIVATE CREDIT

STATIC POOL DATA

SLM Student Loan Trust 2006-A

DELINQUENCY STATUS

Issue	Collection Period End Date	Aggregate Outstanding Principal	
		Total Repayment	Total Principal
2003-A	02/28/05	\$602,123,415	\$884,601,548
	05/31/05	\$602,428,841	\$866,207,440
	08/31/05	\$591,367,299	\$847,476,146
	11/30/05	\$602,343,767	\$835,944,733
2003-B	08/31/03	\$387,585,534	\$1,200,884,934
	11/30/03	\$465,563,075	\$1,195,939,429
	02/29/04	\$484,659,763	\$1,186,496,470
	05/31/04	\$488,658,930	\$1,173,427,505
	08/31/04	\$517,754,939	\$1,163,803,197
	11/30/04	\$638,236,764	\$1,161,694,974
	02/28/05	\$642,900,919	\$1,148,036,145
	05/31/05	\$650,930,147	\$1,130,198,354
	08/31/05	\$651,442,016	\$1,112,171,858
	11/30/05	\$703,127,630	\$1,106,306,250
2003-C	11/30/03	\$414,533,074	\$1,205,163,347
	02/29/04	\$465,108,206	\$1,201,155,218
	05/31/04	\$483,267,254	\$1,191,347,009
	08/31/04	\$524,208,914	\$1,186,032,124
	11/30/04	\$650,587,673	\$1,184,661,987
	02/28/05	\$704,134,297	\$1,177,787,583

STATIC POOL DATA

DELINQUENCY STATUS

Aggregate Outstanding Principal Balance

Number of Days Delinquent Ranges

Issue	Collection Period End Date	Number of Days Delinquent Ranges								Total Delinquent > 30 Days
		0 to 30 Days	31 to 60 Days	61 to 90 Days	91 to 120 Days	121 to 150 Days	151 to 180 Days	181 to 210 Days	> 210 Days	
2003-C	05/31/05	\$675,663,695	\$16,697,547	\$5,790,664	\$6,514,086	\$3,928,120	\$1,409,759	\$-	\$-	\$34,340,176
	08/31/05	\$672,971,886	\$21,367,739	\$10,086,907	\$6,081,128	\$3,963,688	\$1,363,008	\$-	\$-	\$42,862,469
	11/30/05	\$705,596,000	\$18,505,595	\$6,718,848	\$2,393,448	\$2,493,025	\$830,308	\$-	\$-	\$30,941,224
2004-A	05/31/04	\$405,025,842	\$10,433,396	\$4,224,641	\$2,656,616	\$2,130,816	\$525,170	\$-	\$-	\$19,970,639
	08/31/04	\$456,427,161	\$14,220,120	\$6,703,722	\$2,864,737	\$1,965,284	\$829,185	\$-	\$-	\$26,583,048
	11/30/04	\$568,180,429	\$14,190,223	\$7,410,966	\$3,478,240	\$3,841,487	\$1,598,928	\$-	\$-	\$30,519,844
	02/28/05	\$596,076,894	\$21,956,545	\$10,242,877	\$4,782,470	\$2,891,937	\$745,463	\$-	\$-	\$40,619,292
	05/31/05	\$633,654,116	\$16,158,868	\$6,053,336	\$6,787,766	\$3,580,948	\$649,135	\$-	\$-	\$33,230,054
	08/31/05	\$644,969,698	\$22,904,140	\$10,246,992	\$5,539,474	\$3,589,531	\$785,780	\$-	\$-	\$43,065,918
	11/30/05	\$678,065,830	\$19,476,802	\$6,921,341	\$3,210,035	\$2,538,537	\$971,942	\$-	\$-	\$33,118,656
2004-B	08/31/04	\$93,283,810	\$5,164,929	\$2,546,168	\$1,100,253	\$440,570	\$188,638	\$-	\$-	\$9,440,557
	11/30/04	\$261,675,069	\$3,942,287	\$1,746,281	\$1,086,460	\$1,619,956	\$1,016,495	\$-	\$-	\$9,411,479
	02/28/05	\$288,275,721	\$9,786,249	\$7,699,617	\$1,895,166	\$955,621	\$189,157	\$-	\$-	\$20,525,810
	05/31/05	\$317,225,840	\$7,206,425	\$2,094,446	\$2,917,306	\$1,717,672	\$192,231	\$-	\$-	\$14,128,081
	08/31/05	\$346,886,052	\$12,909,358	\$6,124,938	\$3,760,627	\$1,580,176	\$135,389	\$-	\$-	\$24,510,488
	11/30/05	\$482,125,752	\$9,731,664	\$3,230,790	\$1,443,955	\$1,901,609	\$442,649	\$-	\$-	\$16,750,666
2005-A	05/31/05	\$225,367,121	\$5,221,082	\$2,062,071	\$655,904	\$-	\$-	\$-	\$-	\$7,939,057
	08/31/05	\$290,352,911	\$10,083,542	\$4,007,665	\$1,981,930	\$1,536,491	\$270,816	\$-	\$-	\$17,880,444
	11/30/05	\$442,308,121	\$8,497,082	\$4,034,236	\$1,019,477	\$1,409,316	\$217,959	\$-	\$-	\$15,178,069
2005-B	11/30/05	\$284,461,033	\$5,123,552	\$1,461,261	\$734,772	\$499,434	\$-	\$-	\$-	\$7,819,019

TRANSACTION TYPE: PRIVATE CREDIT

STATIC POOL DATA

SLM Student Loan Trust 2006-A

DELINQUENCY STATUS

Issue	Collection Period End Date	Aggregate Outstanding Principal	
		Total Repayment	Total Principal
2003-C	05/31/05	\$710,003,872	\$1,161,614,780
	08/31/05	\$715,834,355	\$1,147,339,296
	11/30/05	\$736,537,224	\$1,138,666,280
2004-A	05/31/04	\$424,996,482	\$1,203,521,803
	08/31/04	\$483,010,208	\$1,198,179,836
	11/30/04	\$598,700,273	\$1,195,375,714
	02/28/05	\$636,696,186	\$1,187,391,567
	05/31/05	\$666,884,170	\$1,173,713,636
	08/31/05	\$688,035,616	\$1,162,501,119
	11/30/05	\$711,184,487	\$1,154,908,216
2004-B	08/31/04	\$102,724,368	\$1,244,282,059
	11/30/04	\$271,086,548	\$1,245,886,616
	02/28/05	\$308,801,531	\$1,241,471,580
	05/31/05	\$331,353,921	\$1,233,601,193
	08/31/05	\$371,396,540	\$1,226,709,767
	11/30/05	\$498,876,418	\$1,232,717,699
2005-A	05/31/05	\$233,306,178	\$1,446,800,119
	08/31/05	\$308,233,356	\$1,440,256,514
	11/30/05	\$457,486,190	\$1,445,216,457
2005-B	11/30/05	\$292,280,052	\$1,441,134,651

STATIC POOL DATA

DELINQUENCY STATUS

Percent of Pool By Outstanding Principal Balance

Issue	Collection Period End Date	Number of Days Delinquent Ranges								Total Delinquent > 30 Days
		0 to 30 Days	31 to 60 Days	61 to 90 Days	91 to 120 Days	121 to 150 Days	151 to 180 Days	181 to 210 Days	> 210 Days	
2002-A	11/30/02	49.75%	0.93%	0.41%	0.30%	0.31%	0.02%	- %	- %	1.97%
	02/28/03	55.36%	1.69%	1.02%	0.18%	0.11%	0.03%	- %	- %	3.03%
	05/31/03	56.83%	1.13%	0.69%	0.34%	0.19%	0.01%	- %	- %	2.36%
	08/31/03	58.50%	1.75%	1.00%	0.28%	0.15%	0.04%	- %	- %	3.22%
	11/30/03	61.56%	1.52%	0.83%	0.39%	0.29%	0.07%	0.01%	- %	3.11%
	02/29/04	66.91%	2.01%	0.94%	0.40%	0.30%	0.14%	0.01%	- %	3.81%
	05/31/04	66.86%	1.54%	0.81%	0.57%	0.36%	0.14%	- %	- %	3.43%
	08/31/04	68.72%	1.77%	1.12%	0.49%	0.45%	0.18%	- %	- %	4.01%
	11/30/04	70.89%	1.89%	1.14%	0.61%	0.57%	0.31%	- %	- %	4.51%
	02/28/05	76.25%	1.94%	0.94%	0.43%	0.39%	0.21%	- %	- %	3.93%
	05/31/05	77.81%	1.60%	0.61%	0.58%	0.37%	0.16%	- %	- %	3.31%
	08/31/05	77.79%	1.84%	0.79%	0.63%	0.37%	0.20%	- %	- %	3.84%
11/30/05	77.20%	1.86%	0.56%	0.27%	0.24%	0.10%	- %	- %	3.03%	
2003-A	05/31/03	42.29%	0.52%	0.13%	0.08%	0.04%	0.01%	- %	- %	0.78%
	08/31/03	44.03%	1.04%	0.46%	0.11%	0.05%	- %	- %	- %	1.66%
	11/30/03	52.70%	0.70%	0.25%	0.17%	0.16%	0.04%	- %	- %	1.32%
	02/29/04	52.48%	1.35%	0.87%	0.26%	0.09%	0.03%	- %	- %	2.59%
	05/31/04	53.75%	0.95%	0.43%	0.39%	0.24%	0.10%	- %	- %	2.10%
	08/31/04	54.75%	1.36%	0.78%	0.34%	0.22%	0.09%	- %	- %	2.80%
	11/30/04	64.34%	1.12%	0.64%	0.46%	0.47%	0.19%	- %	- %	2.89%

TRANSACTION TYPE: PRIVATE CREDIT

STATIC POOL DATA

SLM Student Loan Trust 2006-A

DELINQUENCY STATUS

Issue	Collection Period End Date	Percent of Pool By Outstanding	
		Number of Days Delinquent Ranges	
		Total Repayment	Total Principal
2002-A	11/30/02	51.72%	100.00%
	02/28/03	58.39%	100.00%
	05/31/03	59.19%	100.00%
	08/31/03	61.72%	100.00%
	11/30/03	64.67%	100.00%
	02/29/04	70.72%	100.00%
	05/31/04	70.28%	100.00%
	08/31/04	72.73%	100.00%
	11/30/04	75.41%	100.00%
	02/28/05	80.18%	100.00%
	05/31/05	81.13%	100.00%
	08/31/05	81.63%	100.00%
11/30/05	80.23%	100.00%	
2003-A	05/31/03	43.07%	100.00%
	08/31/03	45.70%	100.00%
	11/30/03	54.02%	100.00%
	02/29/04	55.07%	100.00%
	05/31/04	55.85%	100.00%
	08/31/04	57.54%	100.00%
	11/30/04	67.22%	100.00%

STATIC POOL DATA

DELINQUENCY STATUS

Percent of Pool By Outstanding Principal Balance

Number of Days Delinquent Ranges

Issue	Collection Period End Date	Number of Days Delinquent Ranges								Total Delinquent > 30 Days
		0 to 30 Days	31 to 60 Days	61 to 90 Days	91 to 120 Days	121 to 150 Days	151 to 180 Days	181 to 210 Days	> 210 Days	
2003-A	02/28/05	64.50%	1.83%	0.96%	0.41%	0.29%	0.08%	- %	- %	3.57%
	05/31/05	66.74%	1.16%	0.54%	0.55%	0.43%	0.13%	- %	- %	2.81%
	08/31/05	66.72%	1.28%	0.81%	0.50%	0.33%	0.14%	- %	- %	3.06%
	11/30/05	70.06%	1.00%	0.51%	0.23%	0.14%	0.12%	- %	- %	1.99%
2003-B	08/31/03	30.80%	0.89%	0.33%	0.15%	0.09%	0.01%	- %	- %	1.48%
	11/30/03	37.72%	0.71%	0.24%	0.07%	0.14%	0.04%	- %	- %	1.21%
	02/29/04	38.34%	1.28%	0.83%	0.28%	0.10%	0.02%	- %	- %	2.51%
	05/31/04	39.75%	0.89%	0.38%	0.29%	0.21%	0.12%	- %	- %	1.89%
	08/31/04	41.76%	1.31%	0.73%	0.38%	0.21%	0.10%	- %	- %	2.72%
	11/30/04	52.35%	1.04%	0.52%	0.38%	0.46%	0.19%	- %	- %	2.59%
	02/28/05	52.69%	1.62%	0.98%	0.40%	0.25%	0.06%	- %	- %	3.31%
	05/31/05	54.94%	1.27%	0.46%	0.52%	0.30%	0.10%	- %	- %	2.65%
	08/31/05	55.36%	1.47%	0.77%	0.50%	0.36%	0.12%	- %	- %	3.21%
	11/30/05	61.15%	1.41%	0.51%	0.24%	0.19%	0.06%	- %	- %	2.41%
2003-C	11/30/03	32.94%	0.67%	0.31%	0.24%	0.19%	0.04%	- %	- %	1.46%
	02/29/04	36.26%	1.20%	0.87%	0.23%	0.11%	0.05%	- %	- %	2.46%
	05/31/04	38.59%	0.93%	0.45%	0.31%	0.17%	0.11%	- %	- %	1.97%
	08/31/04	41.24%	1.43%	0.81%	0.38%	0.20%	0.14%	- %	- %	2.96%
	11/30/04	51.95%	1.28%	0.61%	0.37%	0.46%	0.24%	- %	- %	2.96%
	02/28/05	56.07%	1.99%	0.93%	0.44%	0.28%	0.08%	- %	- %	3.72%

TRANSACTION TYPE: PRIVATE CREDIT

STATIC POOL DATA

SLM Student Loan Trust 2006-A

DELINQUENCY STATUS

Issue	Collection Period End Date	Percent of Pool By Outstanding	
		Number of Days Delinquent Ranges	
		Total Repayment	Total Principal
2003-A	02/28/05	68.07%	100.00%
	05/31/05	69.55%	100.00%
	08/31/05	69.78%	100.00%
	11/30/05	72.06%	100.00%
2003-B	08/31/03	32.27%	100.00%
	11/30/03	38.93%	100.00%
	02/29/04	40.85%	100.00%
	05/31/04	41.64%	100.00%
	08/31/04	44.49%	100.00%
	11/30/04	54.94%	100.00%
	02/28/05	56.00%	100.00%
	05/31/05	57.59%	100.00%
	08/31/05	58.57%	100.00%
11/30/05	63.56%	100.00%	
2003-C	11/30/03	34.40%	100.00%
	02/29/04	38.72%	100.00%
	05/31/04	40.56%	100.00%
	08/31/04	44.20%	100.00%
	11/30/04	54.92%	100.00%
	02/28/05	59.78%	100.00%

STATIC POOL DATA

DELINQUENCY STATUS

Percent of Pool By Outstanding Principal Balance

Number of Days Delinquent Ranges

Issue	Collection Period End Date	Number of Days Delinquent Ranges								Total Delinquent > 30 Days
		0 to 30 Days	31 to 60 Days	61 to 90 Days	91 to 120 Days	121 to 150 Days	151 to 180 Days	181 to 210 Days	> 210 Days	
2003-C	05/31/05	58.17%	1.44%	0.50%	0.56%	0.34%	0.12%	- %	- %	2.96%
	08/31/05	58.66%	1.86%	0.88%	0.53%	0.35%	0.12%	- %	- %	3.74%
	11/30/05	61.97%	1.63%	0.59%	0.21%	0.22%	0.07%	- %	- %	2.72%
2004-A	05/31/04	33.65%	0.87%	0.35%	0.22%	0.18%	0.04%	- %	- %	1.66%
	08/31/04	38.09%	1.19%	0.56%	0.24%	0.16%	0.07%	- %	- %	2.22%
	11/30/04	47.53%	1.19%	0.62%	0.29%	0.32%	0.13%	- %	- %	2.55%
	02/28/05	50.20%	1.85%	0.86%	0.40%	0.24%	0.06%	- %	- %	3.42%
	05/31/05	53.99%	1.38%	0.52%	0.58%	0.31%	0.06%	- %	- %	2.83%
	08/31/05	55.48%	1.97%	0.88%	0.48%	0.31%	0.07%	- %	- %	3.70%
	11/30/05	58.71%	1.69%	0.60%	0.28%	0.22%	0.08%	- %	- %	2.87%
2004-B	08/31/04	7.50%	0.42%	0.20%	0.09%	0.04%	0.02%	- %	- %	0.76%
	11/30/04	21.00%	0.32%	0.14%	0.09%	0.13%	0.08%	- %	- %	0.76%
	02/28/05	23.22%	0.79%	0.62%	0.15%	0.08%	0.02%	- %	- %	1.65%
	05/31/05	25.72%	0.58%	0.17%	0.24%	0.14%	0.02%	- %	- %	1.15%
	08/31/05	28.28%	1.05%	0.50%	0.31%	0.13%	0.01%	- %	- %	2.00%
	11/30/05	39.11%	0.79%	0.26%	0.12%	0.15%	0.04%	- %	- %	1.36%
2005-A	05/31/05	15.58%	0.36%	0.14%	0.05%	- %	- %	- %	- %	0.55%
	08/31/05	20.16%	0.70%	0.28%	0.14%	0.11%	0.02%	- %	- %	1.24%
	11/30/05	30.60%	0.59%	0.28%	0.07%	0.10%	0.02%	- %	- %	1.05%
2005-B	11/30/05	19.74%	0.36%	0.10%	0.05%	0.03%	- %	- %	- %	0.54%

TRANSACTION TYPE: PRIVATE CREDIT

STATIC POOL DATA

SLM Student Loan Trust 2006-A

DELINQUENCY STATUS

Issue	Collection Period End Date	Percent of Pool By Outstanding	
		Number of Days Delinquent Ranges	
		Total Repayment	Total Principal
2003-C	05/31/05	61.12%	100.00%
	08/31/05	62.39%	100.00%
	11/30/05	64.68%	100.00%
2004-A	05/31/04	35.31%	100.00%
	08/31/04	40.31%	100.00%
	11/30/04	50.08%	100.00%
	02/28/05	53.62%	100.00%
	05/31/05	56.82%	100.00%
	08/31/05	59.19%	100.00%
	11/30/05	61.58%	100.00%
2004-B	08/31/04	8.26%	100.00%
	11/30/04	21.76%	100.00%
	02/28/05	24.87%	100.00%
	05/31/05	26.86%	100.00%
	08/31/05	30.28%	100.00%
	11/30/05	40.47%	100.00%
2005-A	05/31/05	16.13%	100.00%
	08/31/05	21.40%	100.00%
	11/30/05	31.66%	100.00%
2005-B	11/30/05	20.28%	100.00%

TRANSACTION TYPE: PRIVATE CREDIT

STATIC POOL DATA

SERVICER DELINQUENCY PURCHASES AND LOSSES

Aggregate Outstanding Principal Balance

Periodic

Issue	Collection Period End Date	Delinquencies Purchased by Servicer	Charged-Off	Recoveries	Net Losses
2002-A	11/30/02	\$45,334	\$0	\$0	\$0
	02/28/03	\$439,757	\$0	\$0	\$0
	05/31/03	\$384,622	\$0	\$0	\$0
	08/31/03	\$347,273	\$0	\$0	\$0
	11/30/03	\$441,925	\$0	\$0	\$0
	02/29/04	\$592,703	\$0	\$0	\$0
	05/31/04	\$1,154,017	\$0	\$0	\$0
	08/31/04	\$1,332,379	\$0	\$0	\$0
	11/30/04	\$3,201,208	\$0	\$0	\$0
	02/28/05	\$2,524,885	\$0	\$0	\$0
	05/31/05	\$2,232,338	\$0	\$0	\$0
	08/31/05	\$3,089,165	\$0	\$0	\$0
11/30/05	\$2,982,661	\$0	\$0	\$0	
2003-A	05/31/03	\$79,003	\$0	\$0	\$0
	08/31/03	\$353,324	\$0	\$0	\$0
	11/30/03	\$173,809	\$0	\$0	\$0
	02/29/04	\$737,588	\$0	\$0	\$0
	05/31/04	\$788,272	\$0	\$0	\$0
	08/31/04	\$1,539,447	\$0	\$0	\$0
	11/30/04	\$2,274,469	\$0	\$0	\$0

TRANSACTION TYPE: PRIVATE CREDIT

STATIC POOL DATA

SLM Student Loan Trust 2006-A

SERVICER DELINQUENCY PURCHASES AND LOSSES

Aggregate Outstanding Principal Balance

Periodic

Issue	Collection Period End Date	Delinquencies Purchased by Servicer	Charged-Off	Recoveries	Net Losses
2003-A	02/28/05	\$2,086,297	\$0	\$0	\$0
	05/31/05	\$2,406,880	\$0	\$0	\$0
	08/31/05	\$4,471,253	\$0	\$0	\$0
	11/30/05	\$3,809,290	\$0	\$0	\$0
2003-B	08/31/03	\$84,037	\$0	\$0	\$0
	11/30/03	\$559,869	\$0	\$0	\$0
	02/29/04	\$873,947	\$0	\$0	\$0
	05/31/04	\$959,576	\$0	\$0	\$0
	08/31/04	\$1,506,141	\$0	\$0	\$0
	11/30/04	\$2,889,718	\$0	\$0	\$0
	02/28/05	\$2,513,224	\$0	\$0	\$0
	05/31/05	\$2,473,300	\$0	\$0	\$0
	08/31/05	\$3,914,973	\$0	\$0	\$0
	11/30/05	\$3,604,251	\$0	\$0	\$0
2003-C	11/30/03	\$76,895	\$0	\$0	\$0
	02/29/04	\$1,151,451	\$0	\$0	\$0
	05/31/04	\$1,017,501	\$0	\$0	\$0
	08/31/04	\$1,411,770	\$0	\$0	\$0
	11/30/04	\$2,977,903	\$0	\$0	\$0
	02/28/05	\$2,477,720	\$0	\$0	\$0

TRANSACTION TYPE: PRIVATE CREDIT

STATIC POOL DATA

SLM Student Loan Trust 2006-A

SERVICER DELINQUENCY PURCHASES AND LOSSES

Aggregate Outstanding Principal Balance

Periodic

Issue	Collection Period End Date	Delinquencies Purchased by Servicer	Charged-Off	Recoveries	Net Losses
2003-C	05/31/05	\$2,671,088	\$0	\$0	\$0
	08/31/05	\$3,551,971	\$0	\$0	\$0
	11/30/05	\$3,854,908	\$0	\$0	\$0
2004-A	05/31/04	\$227,346	\$0	\$0	\$0
	08/31/04	\$1,439,711	\$0	\$0	\$0
	11/30/04	\$1,840,883	\$0	\$0	\$0
	02/28/05	\$1,444,092	\$0	\$0	\$0
	05/31/05	\$2,418,731	\$0	\$0	\$0
	08/31/05	\$2,466,317	\$0	\$0	\$0
	11/30/05	\$2,592,358	\$0	\$0	\$0
2004-B	08/31/04	\$148,245	\$0	\$0	\$0
	11/30/04	\$733,922	\$0	\$0	\$0
	02/28/05	\$1,013,868	\$0	\$0	\$0
	05/31/05	\$936,277	\$0	\$0	\$0
	08/31/05	\$1,076,057	\$0	\$0	\$0
	11/30/05	\$844,523	\$0	\$0	\$0
2005-A	05/31/05	\$90,158	\$0	\$0	\$0
	08/31/05	\$260,742	\$0	\$0	\$0
	11/30/05	\$897,401	\$0	\$0	\$0
2005-B	11/30/05	\$0	\$83,761	\$(109)	\$83,870

Percent of Pool By Outstanding Principal Balance

Periodic

Issue	Collection Period End Date	Delinquencies Purchased by Servicer	Charged-Off	Recoveries	Net Losses
2002-A	11/30/02	0.01%	0.00%	0.00%	0.00%
	02/28/03	0.06%	0.00%	0.00%	0.00%
	05/31/03	0.06%	0.00%	0.00%	0.00%
	08/31/03	0.05%	0.00%	0.00%	0.00%
	11/30/03	0.07%	0.00%	0.00%	0.00%
	02/29/04	0.09%	0.00%	0.00%	0.00%
	05/31/04	0.18%	0.00%	0.00%	0.00%
	08/31/04	0.21%	0.00%	0.00%	0.00%
	11/30/04	0.50%	0.00%	0.00%	0.00%
	02/28/05	0.40%	0.00%	0.00%	0.00%
	05/31/05	0.36%	0.00%	0.00%	0.00%
	08/31/05	0.51%	0.00%	0.00%	0.00%
11/30/05	0.51%	0.00%	0.00%	0.00%	
2003-A	05/31/03	0.01%	0.00%	0.00%	0.00%
	08/31/03	0.04%	0.00%	0.00%	0.00%
	11/30/03	0.02%	0.00%	0.00%	0.00%
	02/29/04	0.08%	0.00%	0.00%	0.00%
	05/31/04	0.08%	0.00%	0.00%	0.00%
	08/31/04	0.16%	0.00%	0.00%	0.00%
	11/30/04	0.24%	0.00%	0.00%	0.00%

Percent of Pool By Outstanding Principal Balance

Issue	Collection Period End Date	Periodic			
		Delinquencies Purchased by Servicer	Charged-Off	Recoveries	Net Losses
2003-A	02/28/05	0.22%	0.00%	0.00%	0.00%
	05/31/05	0.26%	0.00%	0.00%	0.00%
	08/31/05	0.50%	0.00%	0.00%	0.00%
	11/30/05	0.44%	0.00%	0.00%	0.00%
2003-B	08/31/03	0.01%	0.00%	0.00%	0.00%
	11/30/03	0.05%	0.00%	0.00%	0.00%
	02/29/04	0.07%	0.00%	0.00%	0.00%
	05/31/04	0.08%	0.00%	0.00%	0.00%
	08/31/04	0.12%	0.00%	0.00%	0.00%
	11/30/04	0.24%	0.00%	0.00%	0.00%
	02/28/05	0.21%	0.00%	0.00%	0.00%
	05/31/05	0.21%	0.00%	0.00%	0.00%
	08/31/05	0.33%	0.00%	0.00%	0.00%
	11/30/05	0.31%	0.00%	0.00%	0.00%
2003-C	11/30/03	0.01%	0.00%	0.00%	0.00%
	02/29/04	0.09%	0.00%	0.00%	0.00%
	05/31/04	0.08%	0.00%	0.00%	0.00%
	08/31/04	0.11%	0.00%	0.00%	0.00%
	11/30/04	0.24%	0.00%	0.00%	0.00%
	02/28/05	0.20%	0.00%	0.00%	0.00%

TRANSACTION TYPE: PRIVATE CREDIT

STATIC POOL DATA

SLM Student Loan Trust 2006-A

SERVICER DELINQUENCY PURCHASES AND LOSSES

Percent of Pool By Outstanding Principal Balance

Issue	Collection Period End Date	Periodic			
		Delinquencies Purchased by Servicer	Charged-Off	Recoveries	Net Losses
2003-C	05/31/05	0.22%	0.00%	0.00%	0.00%
	08/31/05	0.29%	0.00%	0.00%	0.00%
	11/30/05	0.32%	0.00%	0.00%	0.00%
2004-A	05/31/04	0.02%	0.00%	0.00%	0.00%
	08/31/04	0.12%	0.00%	0.00%	0.00%
	11/30/04	0.15%	0.00%	0.00%	0.00%
	02/28/05	0.12%	0.00%	0.00%	0.00%
	05/31/05	0.20%	0.00%	0.00%	0.00%
	08/31/05	0.20%	0.00%	0.00%	0.00%
	11/30/05	0.21%	0.00%	0.00%	0.00%
2004-B	08/31/04	0.01%	0.00%	0.00%	0.00%
	11/30/04	0.06%	0.00%	0.00%	0.00%
	02/28/05	0.08%	0.00%	0.00%	0.00%
	05/31/05	0.07%	0.00%	0.00%	0.00%
	08/31/05	0.08%	0.00%	0.00%	0.00%
	11/30/05	0.06%	0.00%	0.00%	0.00%
2005-A	05/31/05	0.01%	0.00%	0.00%	0.00%
	08/31/05	0.02%	0.00%	0.00%	0.00%
	11/30/05	0.06%	0.00%	0.00%	0.00%
2005-B	11/30/05	0.00%	0.01%	0.00%	0.01%

TRANSACTION TYPE: PRIVATE CREDIT

STATIC POOL DATA

SERVICER DELINQUENCY PURCHASES AND LOSSES

Aggregate Outstanding Principal Balance

Cumulative

Issue	Collection Period End Date	Delinquencies Purchased by Servicer	Charged-Off	Recoveries	Net Losses
2002-A	11/30/02	\$45,334	\$0	\$0	\$0
	02/28/03	\$485,091	\$0	\$0	\$0
	05/31/03	\$869,713	\$0	\$0	\$0
	08/31/03	\$1,216,986	\$0	\$0	\$0
	11/30/03	\$1,658,911	\$0	\$0	\$0
	02/29/04	\$2,251,614	\$0	\$0	\$0
	05/31/04	\$3,405,631	\$0	\$0	\$0
	08/31/04	\$4,738,010	\$0	\$0	\$0
	11/30/04	\$7,939,218	\$0	\$0	\$0
	02/28/05	\$10,464,103	\$0	\$0	\$0
	05/31/05	\$12,696,441	\$0	\$0	\$0
	08/31/05	\$15,785,606	\$0	\$0	\$0
11/30/05	\$18,768,267	\$0	\$0	\$0	
2003-A	05/31/03	\$79,003	\$0	\$0	\$0
	08/31/03	\$432,327	\$0	\$0	\$0
	11/30/03	\$606,136	\$0	\$0	\$0
	02/29/04	\$1,343,725	\$0	\$0	\$0
	05/31/04	\$2,131,997	\$0	\$0	\$0
	08/31/04	\$3,671,444	\$0	\$0	\$0
	11/30/04	\$5,945,913	\$0	\$0	\$0

STATIC POOL DATA

SERVICER DELINQUENCY PURCHASES AND LOSSES

Aggregate Outstanding Principal Balance

Cumulative

Issue	Collection Period End Date	Delinquencies Purchased by Servicer	Charged-Off	Recoveries	Net Losses
2003-A	02/28/05	\$8,032,210	\$0	\$0	\$0
	05/31/05	\$10,439,090	\$0	\$0	\$0
	08/31/05	\$14,910,343	\$0	\$0	\$0
	11/30/05	\$18,719,632	\$0	\$0	\$0
2003-B	08/31/03	\$84,037	\$0	\$0	\$0
	11/30/03	\$643,907	\$0	\$0	\$0
	02/29/04	\$1,517,853	\$0	\$0	\$0
	05/31/04	\$2,477,429	\$0	\$0	\$0
	08/31/04	\$3,983,570	\$0	\$0	\$0
	11/30/04	\$6,873,288	\$0	\$0	\$0
	02/28/05	\$9,386,511	\$0	\$0	\$0
	05/31/05	\$11,859,812	\$0	\$0	\$0
	08/31/05	\$15,774,784	\$0	\$0	\$0
	11/30/05	\$19,379,036	\$0	\$0	\$0
2003-C	11/30/03	\$76,895	\$0	\$0	\$0
	02/29/04	\$1,228,346	\$0	\$0	\$0
	05/31/04	\$2,245,847	\$0	\$0	\$0
	08/31/04	\$3,657,617	\$0	\$0	\$0
	11/30/04	\$6,635,520	\$0	\$0	\$0
	02/28/05	\$9,113,239	\$0	\$0	\$0

TRANSACTION TYPE: PRIVATE CREDIT

STATIC POOL DATA

SLM Student Loan Trust 2006-A

SERVICER DELINQUENCY PURCHASES AND LOSSES

Aggregate Outstanding Principal Balance

Cumulative

Issue	Collection Period End Date	Delinquencies Purchased by Servicer	Charged-Off	Recoveries	Net Losses
2003-C	05/31/05	\$11,784,327	\$0	\$0	\$0
	08/31/05	\$15,336,298	\$0	\$0	\$0
	11/30/05	\$19,191,207	\$0	\$0	\$0
2004-A	05/31/04	\$227,346	\$0	\$0	\$0
	08/31/04	\$1,667,056	\$0	\$0	\$0
	11/30/04	\$3,507,940	\$0	\$0	\$0
	02/28/05	\$4,952,032	\$0	\$0	\$0
	05/31/05	\$7,370,763	\$0	\$0	\$0
	08/31/05	\$9,837,079	\$0	\$0	\$0
	11/30/05	\$12,429,437	\$0	\$0	\$0
2004-B	08/31/04	\$148,245	\$0	\$0	\$0
	11/30/04	\$882,167	\$0	\$0	\$0
	02/28/05	\$1,896,035	\$0	\$0	\$0
	05/31/05	\$2,832,312	\$0	\$0	\$0
	08/31/05	\$3,908,369	\$0	\$0	\$0
	11/30/05	\$4,752,892	\$0	\$0	\$0
2005-A	05/31/05	\$90,158	\$0	\$0	\$0
	08/31/05	\$350,901	\$0	\$0	\$0
	11/30/05	\$1,248,302	\$0	\$0	\$0
2005-B	11/30/05	\$0	\$83,761	\$(109)	\$83,870

Percent of Pool By Outstanding Principal Balance

Issue	Collection Period End Date	Cumulative			
		Delinquencies Purchased by Servicer	Charged-Off	Recoveries	Net Losses
2002-A	11/30/02	0.01%	0.00%	0.00%	0.00%
	02/28/03	0.07%	0.00%	0.00%	0.00%
	05/31/03	0.13%	0.00%	0.00%	0.00%
	08/31/03	0.18%	0.00%	0.00%	0.00%
	11/30/03	0.24%	0.00%	0.00%	0.00%
	02/29/04	0.33%	0.00%	0.00%	0.00%
	05/31/04	0.49%	0.00%	0.00%	0.00%
	08/31/04	0.69%	0.00%	0.00%	0.00%
	11/30/04	1.15%	0.00%	0.00%	0.00%
	02/28/05	1.52%	0.00%	0.00%	0.00%
	05/31/05	1.84%	0.00%	0.00%	0.00%
	08/31/05	2.29%	0.00%	0.00%	0.00%
11/30/05	2.72%	0.00%	0.00%	0.00%	
2003-A	05/31/03	0.01%	0.00%	0.00%	0.00%
	08/31/03	0.04%	0.00%	0.00%	0.00%
	11/30/03	0.06%	0.00%	0.00%	0.00%
	02/29/04	0.13%	0.00%	0.00%	0.00%
	05/31/04	0.21%	0.00%	0.00%	0.00%
	08/31/04	0.37%	0.00%	0.00%	0.00%
	11/30/04	0.59%	0.00%	0.00%	0.00%

Percent of Pool By Outstanding Principal Balance

Issue	Collection Period End Date	Cumulative			
		Delinquencies Purchased by Servicer	Charged-Off	Recoveries	Net Losses
2003-A	02/28/05	0.80%	0.00%	0.00%	0.00%
	05/31/05	1.04%	0.00%	0.00%	0.00%
	08/31/05	1.48%	0.00%	0.00%	0.00%
	11/30/05	1.86%	0.00%	0.00%	0.00%
2003-B	08/31/03	0.01%	0.00%	0.00%	0.00%
	11/30/03	0.05%	0.00%	0.00%	0.00%
	02/29/04	0.12%	0.00%	0.00%	0.00%
	05/31/04	0.20%	0.00%	0.00%	0.00%
	08/31/04	0.32%	0.00%	0.00%	0.00%
	11/30/04	0.55%	0.00%	0.00%	0.00%
	02/28/05	0.75%	0.00%	0.00%	0.00%
	05/31/05	0.95%	0.00%	0.00%	0.00%
	08/31/05	1.26%	0.00%	0.00%	0.00%
	11/30/05	1.55%	0.00%	0.00%	0.00%
2003-C	11/30/03	0.01%	0.00%	0.00%	0.00%
	02/29/04	0.10%	0.00%	0.00%	0.00%
	05/31/04	0.18%	0.00%	0.00%	0.00%
	08/31/04	0.29%	0.00%	0.00%	0.00%
	11/30/04	0.53%	0.00%	0.00%	0.00%
	02/28/05	0.73%	0.00%	0.00%	0.00%

TRANSACTION TYPE: PRIVATE CREDIT

STATIC POOL DATA

SLM Student Loan Trust 2006-A

SERVICER DELINQUENCY PURCHASES AND LOSSES

Percent of Pool By Outstanding Principal Balance

Issue	Collection Period End Date	Cumulative			
		Delinquencies Purchased by Servicer	Charged-Off	Recoveries	Net Losses
2003-C	05/31/05	0.94%	0.00%	0.00%	0.00%
	08/31/05	1.23%	0.00%	0.00%	0.00%
	11/30/05	1.54%	0.00%	0.00%	0.00%
2004-A	05/31/04	0.02%	0.00%	0.00%	0.00%
	08/31/04	0.13%	0.00%	0.00%	0.00%
	11/30/04	0.28%	0.00%	0.00%	0.00%
	02/28/05	0.40%	0.00%	0.00%	0.00%
	05/31/05	0.59%	0.00%	0.00%	0.00%
	08/31/05	0.79%	0.00%	0.00%	0.00%
	11/30/05	0.99%	0.00%	0.00%	0.00%
2004-B	08/31/04	0.01%	0.00%	0.00%	0.00%
	11/30/04	0.07%	0.00%	0.00%	0.00%
	02/28/05	0.15%	0.00%	0.00%	0.00%
	05/31/05	0.22%	0.00%	0.00%	0.00%
	08/31/05	0.30%	0.00%	0.00%	0.00%
	11/30/05	0.37%	0.00%	0.00%	0.00%
2005-A	05/31/05	0.01%	0.00%	0.00%	0.00%
	08/31/05	0.02%	0.00%	0.00%	0.00%
	11/30/05	0.08%	0.00%	0.00%	0.00%
2005-B	11/30/05	0.00%	0.01%	0.00%	0.01%

TRANSACTION TYPE: PRIVATE CREDIT

STATIC POOL DATA

SLM Student Loan Trust 2006-A

PREPAYMENTS

Issue	Collection Period End Date	Since Issuance CPR	Quarterly CPR
2002-A	11/30/02	3.08%	-%
	02/28/03	2.87%	3.38%
	05/31/03	2.38%	2.87%
	08/31/03	2.13%	2.90%
	11/30/03	1.89%	2.54%
	02/29/04	1.86%	2.73%
	05/31/04	1.86%	3.55%
	08/31/04	1.88%	3.80%
	11/30/04	1.99%	4.75%
	02/28/05	2.17%	5.41%
	05/31/05	2.35%	6.61%
	08/31/05	2.61%	8.02%
11/30/05	2.72%	7.15%	
2003-A	05/31/03	2.63%	-%
	08/31/03	2.69%	3.09%
	11/30/03	2.85%	3.00%
	02/29/04	2.79%	3.20%
	05/31/04	2.75%	3.53%
	08/31/04	2.80%	3.93%
	11/30/04	2.85%	4.02%
	02/28/05	2.81%	4.59%
	05/31/05	2.81%	5.38%

TRANSACTION TYPE: PRIVATE CREDIT

STATIC POOL DATA

SLM Student Loan Trust 2006-A

PREPAYMENTS

Issue	Collection Period End Date	Since Issuance CPR	Quarterly CPR
2003-A	08/31/05	2.99%	7.31%
	11/30/05	3.02%	6.47%
2003-B	08/31/03	2.79%	-%
	11/30/03	2.75%	2.45%
	02/29/04	2.68%	2.56%
	05/31/04	2.66%	2.96%
	08/31/04	2.67%	2.94%
	11/30/04	2.76%	3.05%
	02/28/05	2.67%	3.49%
	05/31/05	2.63%	4.40%
	08/31/05	2.79%	5.97%
	11/30/05	2.77%	4.84%
2003-C	11/30/03	2.55%	-%
	02/29/04	2.20%	2.28%
	05/31/04	2.07%	2.69%
	08/31/04	1.98%	2.53%
	11/30/04	2.07%	3.05%
	02/28/05	1.95%	3.00%
	05/31/05	1.93%	4.23%
	08/31/05	1.99%	4.98%
11/30/05	1.99%	4.75%	
2004-A	05/31/04	2.79%	-%

TRANSACTION TYPE: PRIVATE CREDIT

STATIC POOL DATA

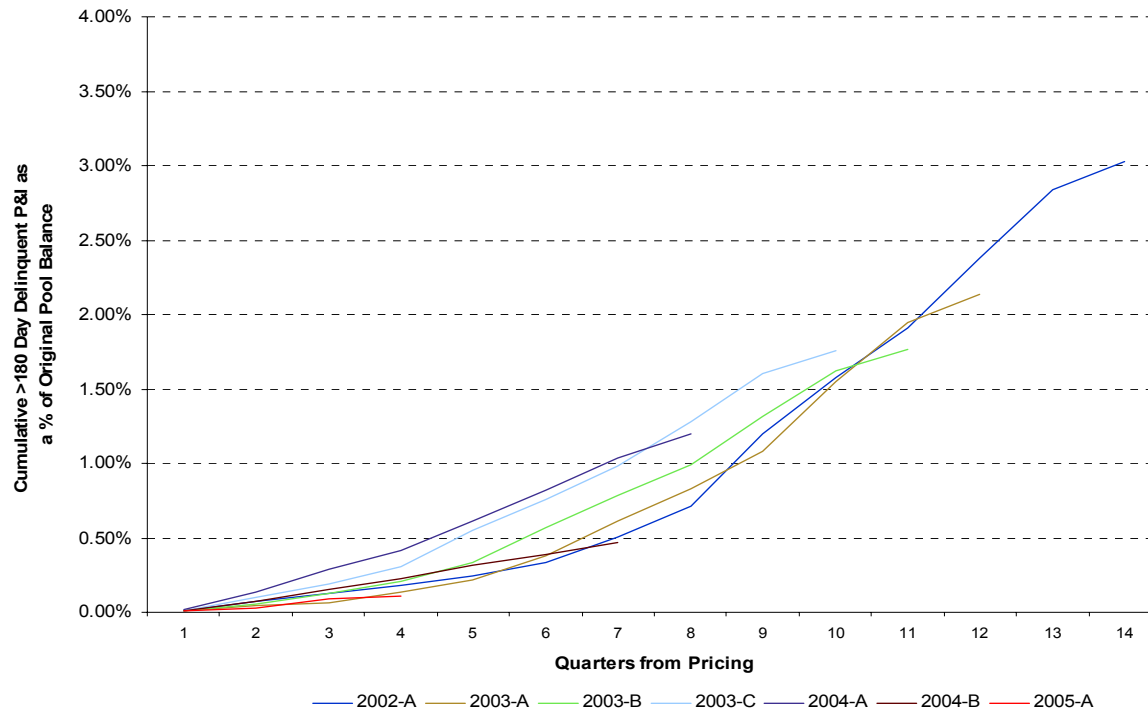
SLM Student Loan Trust 2006-A

PREPAYMENTS

Issue	Collection Period End Date	Since Issuance CPR	Quarterly CPR
2004-A	08/31/04	2.71%	2.99%
	11/30/04	2.59%	2.95%
	02/28/05	2.36%	2.92%
	05/31/05	2.41%	4.45%
	08/31/05	2.46%	4.64%
	11/30/05	2.40%	4.25%
2004-B	08/31/04	2.33%	-%
	11/30/04	2.38%	2.22%
	02/28/05	2.12%	2.25%
	05/31/05	2.01%	3.10%
	08/31/05	2.05%	3.72%
	11/30/05	2.04%	3.22%
2005-A	05/31/05	2.66%	-%
	08/31/05	3.09%	3.61%
	11/30/05	2.86%	2.97%
2005-B	11/30/05	1.41%	-%

GRAPHS

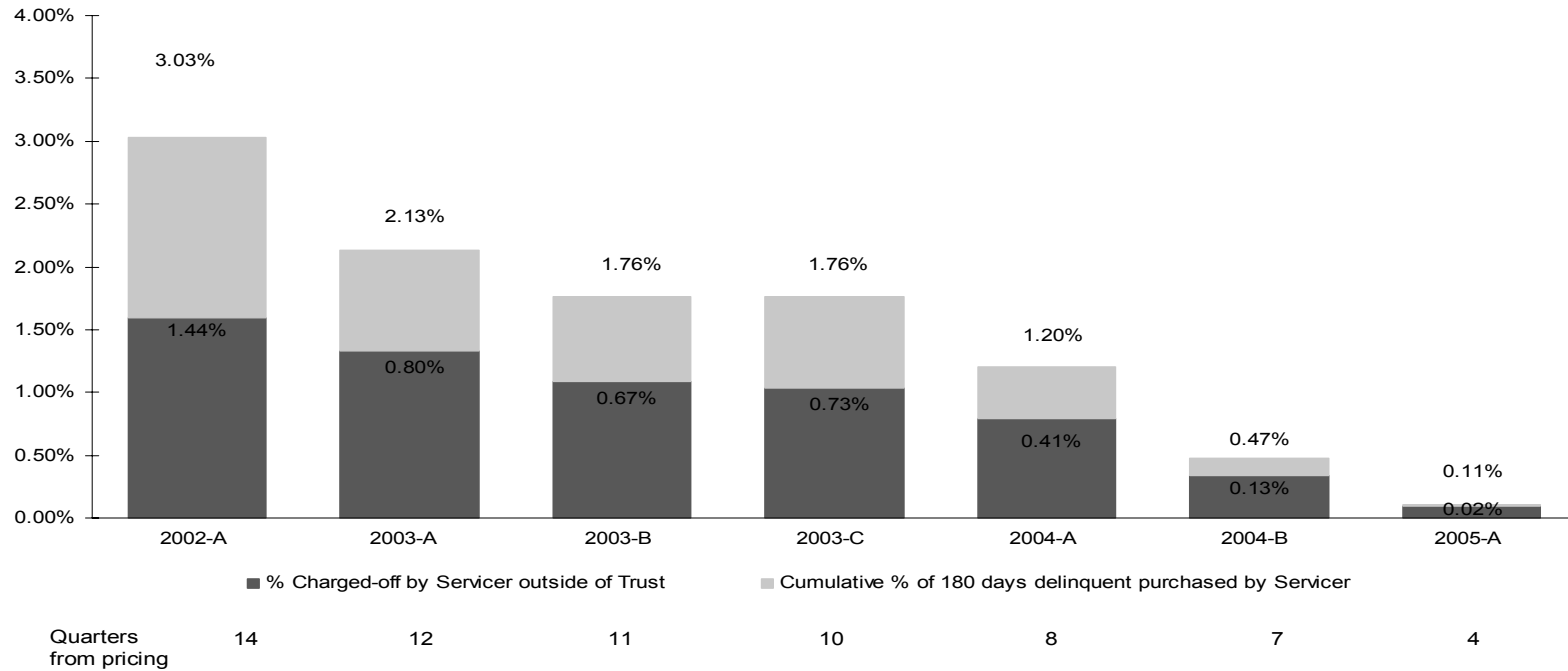
180 Day Delinquent Loans Purchased by the Servicer



(1) For SLM Private Credit Student Loan ABS issued prior to 2005-B, it was the servicer's policy but not its obligation to repurchase loans that became 180+ days delinquent. As a result, actual charge offs in the trust on SLM Private Credit ABS issued prior to 2005-B equal zero.

GRAPHS

Cumulative Charge-Offs of 180 Day Delinquent Loans Purchased by the Servicer



TRANSACTION TYPE: PRIVATE CREDIT
 STATIC POOL DATA

GRAPHS

Historical Charge-Off Experience for Loans Repurchased by the Servicer Upon Becoming 180 Days Delinquent

